



Monash Institute of Health Services Research

Annual Report 2006



Mission

We exist to help people have a safe and effective encounter with the health care system.

We are an institute of academic expertise within Monash University based at Southern Health in Victoria, Australia. We form part of the Australian and global community of health researchers and educators.

We are an inter-disciplinary team with expertise in the synthesis of evidence, implementation of best practice and evaluation of change. We work with clinicians and consumers, managers and policy makers to provide an independent perspective.

We improve health care outcomes through applied research, education, advocacy and innovation in the areas of clinical management, service delivery and health policy.

Values

- Be passionate about health care improvement
- Celebrate excellence
- Focus on our vision
- Work together
- Act with integrity
- Treat people with respect
- Embrace diversity
- Nurture innovation

Contents

Monash Institute of Health Services Research	4
What is Health Services Research?	4
Organisation and governance	4
Outline of MIHSR committees	5
Director's report	6
Advisory board	8
Staff and students	9
Centres, Units and Specialist Academic Services	
Australasian Cochrane Centre	14
Centre for Clinical Effectiveness	15
Monash Ageing Research Centre (MONARC)	17
Jean Hailes Research Unit	18
Turning Point Alcohol and Drug Centre (Affiliation)	19
e-Health Research Unit	19
Health Informatics Education Unit	20
Health Operations Research Unit	20
Healthy Ageing Research Unit (HARU)	21
Gender and Medicine Unit	22
Biostatistics Service	23
Health Sociology Education Service	25
Evidence Based Clinical Practice Education Service	26
Research grants and service contracts	27
Prizes and awards	31
Journal publications	32
Books and book chapters	35
Online publications	35
Reports and other publications	36
Oral presentations	38
Poster presentations	44
Financial Statement to 31 December 2006	46

Monash Institute of Health Services Research

The Monash Institute of Health Services Research (MIHSR) was established in 1999 as a response to the challenge of ensuring people have a safe and effective encounter with the healthcare system. We improve healthcare outcomes through applied research, education, advocacy and innovation in the areas of clinical management, service delivery and health policy.

The Institute incorporates a multidisciplinary team with expertise in the synthesis of evidence, implementation of best practice and evaluation of change. We work together with clinicians, consumers, managers and policy makers to provide an independent perspective.

We are an institute of academic knowledge, strength and eminence within Monash University based at Southern Health, consisting of participating Centres, Units and Services. Our research and education programs draw upon staff from these groups creating a truly multidisciplinary environment. The Institute is proud to contribute to the growing Australian and global community of health researchers and educators.

The Institute achieves its mission by:

- Undertaking high quality, applied research.
- Offering focussed education programs that facilitate healthcare leadership and encourage appropriate changes.
- Fostering strategic partnerships with relevant organisations and individuals, locally, nationally and internationally.
- Creating an environment which values, supports and develops our team of highly skilled staff.

Centres, Units and Specialist Academic Services within the Institute include:

- Australasian Cochrane Centre
- Centre for Clinical Effectiveness
- Monash Ageing Research Centre
- Jean Hailes Foundation Research Centre
- Turning Point Alcohol and Drug Research Centre (affiliation)

- e-Health Research Unit and Health Informatics Education Research Unit
- Health Operations Research Unit
- Healthy Ageing Research Unit
- Gender and Medicine Unit
- Biostatistics Service
- Health Sociology Education Service
- Evidence-Based Clinical Practice Education Service

What is Health Services Research?

Health Services Research (HSR) addresses the relationships between need, demand, supply, use and outcomes of health services. HSR is concerned with the quality and effectiveness of healthcare processes and delivery. It is strategically placed to interface with health research, clinical practice and health policy, and therefore able to improve the utilisation of research knowledge and evidence to efficiently and effectively inform clinical practice, health service delivery and policy development

HSR is the strategic amalgam of a wide range of disciplines including health systems management, health economics, clinical epidemiology, evidence-based practice, organisational change, information technology, social sciences, biostatistics and operations research. When united under the umbrella of HSR, the synergy of these disciplines enables research outcomes which exceed their individual contributions.

Organisation and governance

The Institute is organised through its component Centres and Units. These contribute to the organisation of the Institute through its internal committee structure. The Executive meets weekly in support of the Director in taking responsibility for oversight of the Institute performance in relation to the business plan, budgetary performance and stakeholder relationships. The Strategic Operations Group is an information sharing forum for academic leaders to provide feedback which contributes to the Executive decision making process. This group meets every six weeks. A general staff meeting is held monthly.

Monthly research seminars are held. These provide an opportunity for staff to present on research prior to presentation in external fora, as well as for visiting researchers to present on their own work. Spring and Autumn seminars are held to provide teaching in the skills of evidence based clinical practice and good research practice. A Postgraduate Supervisors Committee meets monthly to manage the supervision of the PhD students attached to the Institute. Until June 2006, the Institute was served by an Advisory Board, chaired by Mr Steve Somogyi. Subsequently, a Research Advisory Board is being established with an independent Chair. Its terms of reference include representation from stakeholders and advising the Director on key research directions and opportunities.

For University administrative matters the Institute is accountable through the Southern Clinical School of the Faculty of Medicine, Nursing and Health Sciences. Accountability for performance to Southern Health is provided through an Advisory Committee comprised of representatives of the Executive Management Team of Southern Health, chaired by the Director of Medical Services, which meets every three months. This committee monitors performance

against the Service Level Agreement in fulfillment of the triennial funding agreement between the Institute and Southern Health.

Outline of MIHSR committees

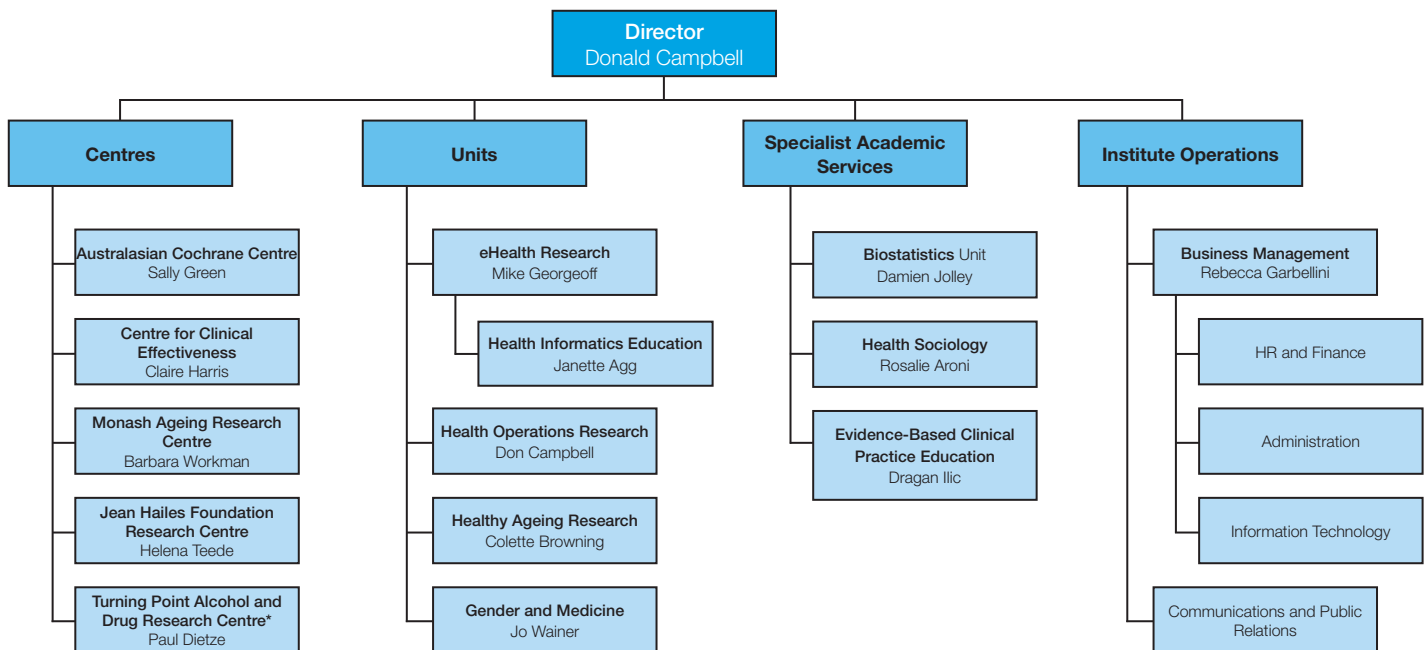
MIHSR Executive Committee

The MIHSR Executive Team meets weekly to discuss and make decisions on the Institute's operational and strategic matters.

Strategic Operations Group

Each member of the Strategic Operations Group reflects a functional research or educational element within the Institute, and contributes input and feedback to assist the Executive with broader decision making responsibilities. The meetings provide a forum to share and exchange information related to academic endeavours within the Institute and to draw attention to emerging opportunities for research and teaching.

Lines of responsibility



* Turning Point Alcohol and Drug Research Centre is an affiliate of MIHSR

Director's report



The Institute plays a special role for Monash University as it is a conjoint entity of both the University and Southern Health, one of the University's largest partner organisations in the delivery of its undergraduate medical curriculum and a valued research partner in its own right. The focus of the Institute's activities is its mission: to undertake research to promote safe and effective outcomes from healthcare. To achieve its mission through research, education and service requires committed partnerships. Building on these partnerships requires a focussed, well-managed, collaborative effort guided by the strategic plans of these partners.

The Year 2006 has been a year of review of our organisation and our strategic relationships and research activities, as well as a year when new researchers joined the Institute. We have undertaken a research strategic planning exercise to ensure a better internal alignment of our research activities within the Institute to maximise the research potential of our participating centres and to ensure alignment of our research activities with the strategic plans of our key stakeholders. We have restructured our Centres, Units and Specialist Academic Services into more coherent entities with functional responsibilities which relate to their research skill sets to achieve a better internal alignment of our research activities. Our new organisation structure clearly identifies who we are and what we do. We have been fortunate to recruit several key staff in the area of evidence-based clinical practice and biostatistics.

Having disestablished our Advisory Board during 2006, we are currently establishing our Research Advisory Committee with representation from key stakeholders to help achieve this strategic goal. I would like to particularly thank the retiring members of the Advisory Board and its Chair, Mr Steve Somogyi. All members of the Advisory Board provided valuable advice and assistance to the Institute during the last 8 years.

In 2006 the Institute members have established very strong applied research ties with the Executive of Southern Health, supported by a Service Level Agreement. The governance relationships between the Institute and Southern Health have been strengthened by the creation of a Southern Health MIHSR Advisory Committee. Our major activities for Southern Health are undertaken by the Centre for Clinical Effectiveness, the newly established Health Operations Research Unit and the Senior Biostatistician/Deputy Institute Director, Associate Professor Damien Jolley, who works very closely with Southern Health Research Directorate in support of its research governance as well as directly with clinical researchers at Southern Health. The Health Operations

Research Unit focuses on supporting management decisions in the areas of access and demand management as well as quality of health care. A performance review of our work in support of Southern Health has recently been completed. We have undertaken a communications and public relations audit and are currently implementing our communications and public relations plan.

Research partnerships are a feature of our life, working collaboratively with other entities in the Faculty and elsewhere in the University. Members of MIHSR are currently actively involved in over 35 externally funded research activities. There are currently 19 PhD students in the Institute. Two of our enrolling students received prestigious Australian Postgraduate Scholarships, one received a NHMRC scholarship and one a RACP Fellowship. Members of the Institute published 62 journal articles, 7 book chapters, 8 online publications and an additional 15 reports for various agencies in the year 2006. Professor Mike Georgeff, who leads the e-Health Research Unit, was recognised for his paper on Reactive Reasoning and Planning with the AAAI Classic Paper Award at the National Conference of the American Association of Artificial Intelligence. Our international links are developing into Southeast Asia, through the Sea-Orchid Project undertaken by the Australasian Cochrane Collaboration in conjunction with colleagues at the University of NSW and University of Adelaide, funded by the Wellcome Trust and the NHMRC. In addition Professor Colette Browning, Professor of Healthy Ageing, who joined MIHSR this year, has established research links with Capital Medical University in Beijing.

Within the University the Institute has a valuable role within the Southern Clinical School, based at Southern Health, and the School of Applied Clinical and Public Health Sciences, with its focus on supporting undergraduate medical education with its leadership role promoting skills of knowledge management and evidence based clinical practice, as part of the Theme of Population Health, Society and Illness. Members of the Institute visited the Monash Malaysia Medical School in Kuala Lumpur to assist staff there to implement the undergraduate curriculum at Monash Malaysia. We are currently reviewing our administration in the context of our evolving relationship with Southern Clinical School.

We face increasing pressure to contain costs across all our areas of activity and to seek additional external funds to undertake research, as the Institute strategic plan reaches maturity. In the future our activities will increasingly focus on building our research capabilities as we foster links in fulfilment of our strategic plan for research. The challenge will be for our efforts to be applied to the maximum advantage of our stakeholders, and for applied health services research to be funded to the same level as biomedical research in recognition of the important role that this research plays to promote safe and effective health care. The key to our success in responding to these challenges is the commitment and talent of our staff and the recognition of the value of investment in research that the Institute undertakes by its stakeholders. For its part, the Institute must communicate its messages clearly to ensure that its stakeholders have a clear understanding of who we are and what we do, as well as an appreciation of how our activities assist them to fulfil their mission of safe and effective health care.

Don Campbell
March 2007

Advisory board

Mr Steve Somogyi (to Jun 2006)

MSc SM FIA
Advisory Board Chair
Member, Executive Group of the Australian Prudential Authority

Ms Linda Sorrell

RN MHA GradCert(Casemix) BHSM
Chief Executive, Southern Health
Chair, Prince Henry's Institute
HealthSMART Services Steering Committee, State Government of Victoria

Professor Edward Byrne AO

MBBS Dsc MD FRCP FRACP
Dean, Faculty of Medicine, Nursing and Health Sciences, Monash University
Non-Executive Board Member, Cochlear Pty Ltd
Board Member, Neurosciences Australia
Board Member, Neurosciences Victoria Pty Ltd
Editor-in-Chief, Internal Medicine Journal

Mr Jeremy G Duffield

BA Economics
Managing Director, Vanguard Investments Australia Ltd
Director, Vanguard Investments Japan Ltd
Deputy Chairman, Investment and Financial Services Association Limited
Board Director, Vanguard Investments Singapore Pte Ltd
Board Director, Plum Financial Services Ltd Board
Deputy Chairman, Board of the Investment and Financial Services Association

Professor Ron Weber

BComm(Hons) MBA PhD FCPAA FACS FICAA FAIS FASSA
Dean, Faculty of Information Technology

Professor Gill Palmer

BSocSci(Hons) MIA PhD
Dean, Faculty of Business and Economics

Dr Craig White

MBBS MBus MRACMA CHE
Southern Health Executive Director Clinical Services and Chief Medical Officer

Mr Jim Walker

BES(Hons) MBA
Account Director, SAP

Professor David Copolov

MBBS PhD FRANZCP FRACP DPM MPM
Senior Advisor on Special Initiatives, Office of the Vice-Chancellor, Monash University
Board Director, Peter MacCallum Cancer Institute
Board Chair, Peter MacCallum Institute Research Advisory Committee
Board Director, Peter Mac Foundation
Director, Governing Board of the Co-operative Research Centre for Water Quality and Treatment

Mr Andrew Guy

LLB MBA
Consultant, Allens Arthur Robinson

Ms Janet Michelmore AO

BA DipEd
Director, Jean Hailes Foundation

Associate Professor Jill Sewell AO

MBBS FRACP FAICD
President (to May 2006), Royal Australasian College of Physicians
Deputy Director, Centre for Community Child Health, RCH

Mr George Pappas

BEC(Hons) MBA
Senior Advisor, The Boston Consulting Group
Chair, Committee for Melbourne
Director, Western Bulldogs Football Club
Chair, Monash Institute of Medical Research Advisory Board

Professor Donald Campbell

MBBS MMedSci(ClinEpi) MD FRACP
Director, Monash Institute of Health Services Research
Head, General Medicine Unit, MMC
Medical Vice-President, Asthma Foundation of Victoria
Chair, DHS Victorian Respiratory Support Service Advisory Committee

Staff and students

Institute

Director

Professor Donald Campbell
MBBS MMedSci(ClinEpi) MD FRACP

Personal Assistant to Director

Jin Leng Graham BA

Business Manager

Rebecca Garbellini (from Feb 2006) DipBusMgt

Operations Director

Kay Currie (to Jan 2006) BA GradDipAppPsych MPH

IT Manager

Nick Walker DipTeaching(Primary) GradDip(Special Ed)
DipInfoTech

IT Officer

Andrew Bowden (to Feb 2006) BCompSci MCSE(NT4.0)

Postgraduate Student Administrator

Cathleen Nolan (to May 2006) Cert Recep and Office
Practices
Josie Ruberto (from May 2006) CertIII(FitTrain) PilRefTrain
DipArts

Finance and Human Resource Officer

Kerry Bowmar AssDipBioSci

Receptionist/Administrative Assistant

Josie Ruberto (to May 2006) CertIII(FitTrain) PilRefTrain DipArts
Jill McIver (from May 2006)

PhD Candidates

Shan Bergin
Rebecca Jenkinson
Shyamala Nadathur

Australasian Cochrane Centre

Director

Associate Professor Sally Green BAppSc(Physio) GradDip(MT)
PhD

Deputy Director

Steven McDonald MA GradDipIntHealth

Administrative Assistants

Melissa Melder (to Sep 2006) BSc
Cindy Manukonga (from Apr 2006) BVA

Research Manager

Jane Predl BA GradDipBusMgt

Research Fellows

Sue Brennan BSc(Hons) GradDipEd
Simon French BAppSc(Chiro) MPH
Joanne McKenzie (to Aug 2006) BSc DapStat MSc
Silva Zavarsek (to Mar 2006) BSc(Hons) PhD

Policy Liaison Officer

Marie Misso BSc(Hons) PhD

Training Coordinator

Denise O'Connor BAppSc(Hons) PhD

Trainers

Sarah Hetrick (to Mar 2006) MA PGCert(HlthSc)
Veronica Pitt BSc(Hons) PhD

Training Administrator

Donna Duyvestyn (from Jul 2006)
CertIV(WorkTrainandAssesment)

SEA-ORCHID Educator

Tari Turner BSc(Biomed) MBus(eBusandComm)
GradCertBiostats

Research Assistants

Hayley Barnes (from Apr 2006) BBiomedSc(Hons)
Kristine Egberts BBiomedSc(Hons)
Kerry Murphy (from Apr 2006) BA GradDipAppSocPsych
GradDipIM(Librarianship) PhD
Sharon King BSc(Hons) Physiology
Rebecca Ryan BSc(Hons) PhD

PhD Candidates

Joanne McKenzie BSc DapStat MSc
Jenny Advocat BA(Anthropology) GradDip(MedAnth)
(Submitted)
Simon French BAppSc(Chiro) MPH
Sue Brennan BSc(Hons) GradDipEd
Dragan Ilic BSc MSc(Reprod) (Submitted)

Centre for Clinical Effectiveness

Director

Professor Donald Campbell (to Sep 2006) MBBS
MMedSc(ClinEpi) MD FRACP
Dr Claire Harris (from Sep 2006) MBBS MSc(PubHlth)
GradDipChildDev FAFPHM

Deputy Director

Ms Kay Currie (to Jan 2006) BA GradDipAppPsych MPH

Public Health Physician and NICS Fellow

Dr Claire Harris (to Sep 2006) MBBS MSc(PubHlth)
GradDipChildDev FAFPHM

Senior Project Officers

Ms Tari Turner BSc(Biomed) MBus(eBusandCommun)
GradCertBiostats
Ms Fiona Wilkinson RN RM BNurs GradDipBusiness

Research Officers

Ms Kelly Allen (from Apr 2006) BSc(Hons)
GradDipEpidandBiostats MPH (HlthSciPubHlthPract)
Ms Fiona Dickson (to Sep 2006) BPhysio MPH
Ms Jane Reid (from Oct 2006) RGN GradDipHlthSci(HlthProm
andHlthEd) GradDipAppSci(HlthStats)

Information Retrieval Officer

Ms Catherine Voutier BSocSc(LibandInfoServ)

Project Officers

Ms Vanessa Hille (to Feb 2006) BHlthSci(HlthProm)
Ms Marie Garrubba (from Sep 2006) BAppSci(HlthSci)

GP Liaison Officer

Dr Danielle Mazza (to Sep 2006) MBBS MD FRACGP
DRANZCOG GradDipWomen'sHlth

Clinical Scholars in Evidence-Based Practice

Ms Leanne Campbell BHlthSc(Nursing) GradCertPaedNurs
GradDipNurs(Children)
Ms Kate Henderson BNurs GradCert(NeonatalIntensiveCare)
Ms Melinda Wilson BNurs BAppSc(HlthProm)
GradCertNurs(Children)
Dr Jennifer Wong MBBS FRACP

Monash Ageing Research Centre (MONARC)

Director

Professor Barbara Workman MBBS MD FRACP

Unit Directors

Professor Robert Iansek BMedSci MBBS PhD FRACP
Professor Daniel O'Connor MBChB MD FRANZCP

Clinical Researchers

Associate Professor Peteris Darzins BMBS PhD
CertSpecCompGerMed FRACP FRCPC
Dr Christina Johnson MBBS FRACP

Research Fellows

Dr Christopher King BA(Hons) PhD MA
Barbara Eppingstall MPsycho
Dr Betina Gardner BA(Psych)(Hons) DPsych(ClinNeuro)
Dr Penelope Pollitt PhD
Dr Susannah Runci DPsych
Dr Kathryn Garland DPsych
Dr Dianne Cameron BPhy GradCertPthy GradCertHlthSci
Dr Frances Huxham DipPhysio GradDip(HealthResMeth) PhD

Senior Lecturer

Dr Ian Presnell MBBS MPM FRANZCP

Honorary Senior Lecturers

Dr George Kuruvilla MBChB MPhil(Edin) FRANZCP
Dr Anna Murphy BHlthSci(Hons) BAppSci(HM) PhD

Honorary Professor

Professor Meg Morris BAppSc(Pthy) MAppSc GradDip(Geron)
PhD FACP

Lecturer

Dr Kate Martyn (from Nov 2006) DPsych

Research Assistant

Janet Wellard BAppSc(Physio)

Administrative Assistants

Maureen Bell
Emma Conyers
Carol McCammon
Camilla Page

Jean Hailes Foundation Research Centre

Director

Professor Helena Teede MBBS FRACP PhD

Administrative Officer and Personal Assistant to Director

Joanne Surace (to Jul 2006)

Georgia Harvey (from Jul 2006)

Research Nurses

Althea Barr RN

Christine Muske RN

Research Fellows

Dr Amanda Deeks (from Mar 2006) BEd GradDipPsych ACTL
PhD MAPS

Dr Sophia Zoungas (from May 2006) MBBS FRACP PhD

Dr Amanda Vincent MBBS FRACP PhD

Dr Carolyn Allan MBBS FRACP PhD

PhD Candidates

Dr Samantha Hutchison MBBS FRACP

Sabrina Gupta (co-supervised with Dr Aroni) BHLthSci(Hons)

Catherine Lombard BSc GradDipDiet APD

Masters Candidates

Dr Jennifer Wong MBBS FRACP

Dr Indra Jayasuria MBBS FRACP

Turning Point Alcohol and Drug Research Centre (Affiliate)

Senior Research Fellow

Associate Professor Paul Dietze BSc(Hons) PhD

e-Health Research Unit and Health Informatics Education

Director (e-Health Research Unit)

Professor Michael Georgeff BSc BE(Aero) PhD

DIC(ImperialCollege) FACS FAAAAI

Centre Leader (Health Informatics Education Unit)

Wendy McPhee (to Apr 2006) MIT(MedInfo) FACHI

Janette Agg (from May 2006) BSc GradDipDP MMgt(Tech)

MACHI

Senior Lecturers

Wendy McPhee (to Apr 2006) MIT(MedInfo) FACHI

Dr Lee Seldon (Faculty of IT) BSc MSc MD PhD

Lecturer

Janette Agg BSc GradDipDP MMgt(Tech) MACHI

Sessional Lecturer

Janette Gogler (May to Nov 2006) RN GradDipEd GradDipHI

GradCertHI

Honorary Staff

Associate Professor Branko Cesnik MBBS MD FACHI

Dr Bob Ribbons BAppSc(Nursing) MEd(EducComp) FACHI

Health Operations Research Unit

Director

Professor Donald Campbell MBBS MMedSci(ClinEpi) MD

FRACP

Project Manager

Keith Stockman BSc MBA

Research Project Officer

Fiona Dickson BPhysio MPH

Casual Research Officer

Dr Omar Abdulwadud MSc PhD

Healthy Ageing Research Unit

Director

Professor Colette Browning (from May 2006) BSc(Hons) MSc
PhD

Senior Research Fellow

Jane Sims (from Jun 2006) PhD

Gender and Medicine Research Unit

Director

Dr Jo Wainer PhD

Research Fellow

Ms Myfanwy Macdonald (Mar to Dec 2006) BA

Honorary Staff

Kakkib li'Dthia Warrawee'a (Jul to Dec 2006) An Aboriginal
man of high degree

Dr Leslie Cannold (Jul to Dec 2006) BA MBioethics PhD

Associate

Ms Ann-Maree Nobelius MSc

PhD Candidates

Associate Professor Deb Colville (from Sep 2006) FRACS
FRACO

Biostatistics Service

Director

Associate Professor Damien Jolley MSc(Epidemiol)(London)
MSc(LaTrobe) CStat

Biostatistician

Ms Pearline Han (from Dec 2006) BSc(Hons) BMus(Therapy)
MMedStat

Fellows from the Victorian Public Health Training Scheme

Sally Kingsland (Jun to Oct) BAsianStudies BSc(Hons) MPH
Alexandra Devine (from Oct 2006) BHlthSci MPH

PhD Candidates

Debra Kerr RN BN MBL GradCertClinResMeth

Health Sociology Service

Director and Senior Lecturer

Dr Rosalie Aroni BA(Hons) PhD

PhD Candidates

Robyn Cant

Barbary Clarke

Emma Hughes

Julie Zabinski

Sabrina Gupta

Associate Professor Deb Colville (from Sep 2006) FRACS
FRACO

Sessional Teachers for Health, Knowledge and Society

Peter Carroll

Meredith Clifford

Peter Farago

Jeff Hood

Emma Hughes

Steven Jeffery

Shane McIver

Steve McMahon

Patricia Lester

Ern Reiders

Evidence Based Clinical Practice Education Service

Senior Lecturer

Dragan Ilic BSc MSc(Reprod)

MIHSR Honorary Staff

Dr Anna-Maria Arabia BSc(Hons) PhD

Dr Fabrizio Carinci Laurea(StatandEcSci)

Professor Marc Cohen MBBS(Hons) PhD BMedSc(Hons)

FAMAS DipAc

Kay Currie (from Feb 2006) BA GradDipAppPsych MPH

Dr Susan Kermond MBBS FRACP CertChildPsych

Julian King BSc MPP GradDipBusMgt

Dr Vicki Kotsirilos MBBS FACNEM

Anne Parkhill BA GradDip(Librarianship) GradDip(BusAdmin)

Dr Kristen Pearson MBBS FRACP

Associate Professor Hannah Piterman BEc(Hons) MEc PhD

Phillipa Middleton BSc(Hons) GradDipLibSt MPH

Michael Robinson BSc(CivilEng)

Dr Paul Talman MBBS BSc(Hons) PhD BMedSc(Hons)

FAMAS DipAc

Dr Ian Woolley MBBS FRACP

Dr Daniel Lewis MBBS(Hons) FRACP

Dr Michael Chou MBBS FACRM FAFRM FRACP

Dr Nicolas Clark MBBS GradDipClinEpi MPH

Dr Justin Brown MA MB BCHir MRCP MRCPCH

Dr Belinda Flanc MBBS FRACP

Dr Walter Gee MBBS(Hons) FRACP

Dr Concetta Di Lorio Laurea(Law)

Centres, units and specialist academic services

Australasian Cochrane Centre

The ACC was established in 1994 at the Flinders Medical Centre in Adelaide and relocated to Melbourne in 1999 under the directorship of the late Professor Chris Silagy. The Monash Institute of Health Services Research now supports the work of the Australasian Cochrane Centre (ACC), funded by The Australian Commonwealth Department of Health and Ageing.

The Centre provides training in systematic review methods which underpin and promote good research practice, and provides international links of strategic importance to Southern Health and Monash University. The ACC aims to promote the equitable provision of effective health care in Australasia by facilitating the preparation and maintenance of systematic reviews and their dissemination and application to influence service provision and clinical practice.

The ACC is one of a number of Cochrane centres established worldwide to co-ordinate the activities of the Cochrane Collaboration. There are now four branches that co-ordinate Cochrane activities in specific geographical areas: New Zealand, Singapore, South Asia and Thailand. As part of responsibilities to the International Cochrane Collaboration, the ACC continually endeavours to effectively link Cochrane activities in Australasia with the international effort.

2006 Highlights and achievements

- SEA-ORCHID Project
- Australasian Cochrane Symposium 2006
- IMPLEMENT Project

SEA-ORCHID Project

South East Asia – Optimising Reproductive and Child Health in Developing Countries

The ACC maintains regional responsibility for fostering Cochrane activities extending to South Asia and South East Asia. Over the past few years, collaborative links have been strengthened with colleagues in both regions to form networks that are able to provide organisational and technical assistance to support local systematic review activity. This increase in capacity ensures that systematic reviews relevant to low and middle income settings are given priority and improves the likelihood of results being disseminated and applied in these settings.

In South East Asia, the SEA-ORCHID Project has proven to be an effective way of ensuring evidence is considered a vital part of decision-making. Now in its third year, SEA-ORCHID is a five-year collaborative capacity building project focused around promoting the generation and use of evidence to inform practice during pregnancy and childbirth in centres across Thailand, Malaysia, Philippines and Indonesia. Monash is one of three Australian universities involved in the project.

Activities supported throughout 2006 included a visit to the ACC of five medical librarians to see how library services and the teaching of information skills can be harnessed to support evidence-based practice. In 2007, further short-term fellowships for systematic review authors and guideline developers will be available. During the year, the ACC also ran courses on how to conduct Cochrane reviews to over 300 people across the various project sites.



SEA-ORCHID Fellows from Indonesia, the Philippines and Thailand

Australasian Cochrane Symposium 2006

The ACC hosts the annual meeting for Australasian contributors to the Cochrane Collaboration. The forums provide an opportunity for local Cochrane participants to come together and obtain further information about issues affecting review authors and staff of Cochrane entities.

The 2006 annual meeting was held in Adelaide in June. With major changes soon expected to affect the way Cochrane reviews are prepared, the focus of the 2006 meeting was on providing authors with advanced insights into methodological and software developments. Invited international speakers included Julian Higgins (biostatistician and co-editor of the Cochrane Handbook of Systematic Reviews of Interventions), Nancy Santesso (knowledge translation specialist) and Nick Royle (Chief Executive Officer of the Cochrane Collaboration).

IMPLEMENT Project

As part of the Centre's research vision of exploring effective ways to inform healthcare decisions through the uptake of evidence, the Centre is coordinating the IMPLEMENT project. Currently in its second year, the three year project is funded by the Australian National Health and Medical Research Council. The project aims to assess the effectiveness and cost-effectiveness of an implementation strategy to improve the management of acute low-back pain in general practice, utilizing the recommendations from an evidence-based clinical practice guideline.

During 2006, data was analysed from stage one of the project, involving focus groups with general practitioners, and the results were used to develop the intervention for a cluster randomized controlled trial. In addition to this, recruitment of the general practitioners for the trial commenced, and will include 92 general practices and over 2000 patients with acute low-back pain.

Further details on The Australasian Cochrane Centre are available at www.cochrane.org.au

Centre For Clinical Effectiveness

The Centre for Clinical Effectiveness (CCE) was established at Southern Health in 1998 by the late Professor Jeremy Anderson, with the mission of enhancing patient outcomes through clinical application of the best available evidence. This was primarily achieved by identifying and appraising evidence from the published literature via 'Evidence Reviews' initiated by Southern Health staff.

Under the directorship of Professor Donald Campbell, the focus of the Centre has evolved over the past three years towards Health Operations Research (HOR), which addresses access and demand management and quality and safety issues within the health care system. Activities related to evidence-based practice (EBP) have continued, but have been predominantly contained within the highly successful Health for Kids program.

In early 2006, the Centre underwent an extensive consultation process with the Southern Health Executive, and senior staff identified that expertise and resources in both HOR and EBP would be of major benefit to the health service. Given the highly specialised nature of these two distinct disciplines, the Health Operations Research Unit (HORU) was created as a separate research unit (refer to later parts of report). This has enabled development of high-level skills and expertise in each area, and provided clarity for Southern Health and other users of these services.

Dr Claire Harris was appointed as Director of CCE in September 2006. Bringing with her to the role experience from the Health for Kids program and her NICS Fellowship in evidence implementation, the goals of the Centre will again focus on EBP, emphasising not only the importance of evidence from research but also the roles of clinicians and consumers in evidence-based decision-making.

The Centre will continue to undertake systematic reviews and provide evidence that informs decision-making. In addition, using this newly acquired expertise the CCE will develop additional guidelines and clinical paths, work more directly with clinicians and consumers to implement evidence-based change, provide training and support to clinicians and managers to enable EBP in their local settings, and continue strengthening research methods of evidence synthesis, implementation and evaluation that will enhance EBP.

2006 Highlights and achievements

- Health for Kids in the South East
- Guideline Development 2006
- Evidence Reviews and Evidence-Based Practice Resources

Health for Kids in the South East

The initial three year DHS funded component of Health for Kids (HFK) ended in June 2006. The program proved highly successful and all the original objectives were achieved. Services and programs developed during this period are now permanently integrated into the health service; the asthma education program is currently being implemented across the state, and funding is being sought to deliver the evidence services at a national level.

Whilst the HFK program has maintained its focus on best practice and partnerships, the key to its success is innovation:

Innovative support systems

- Consumer Participation Program: Enabling and supporting consumer participation in decision-making.
- GP Integration Program: Including a GP perspective in all decision-making, and integrating GP care into Southern Health protocols, recognising their essential role in the healthcare team.
- Clinical Effectiveness Program: Accessing evidence for clinical practice and service delivery, and supporting new ways of working that keep clinicians abreast with best practice.

Innovative clinical practice

- Guidelines and Clinical Paths: Achieving better patient care by developing evidence-based guidelines for common paediatric conditions that are then implemented via clinical paths.

Innovative service delivery

- Paediatric Rapid Review Service: Keeping children out of hospital by preventing admission, enabling early discharge and avoiding re-presentations to the Emergency department, through the 'Rapid Review Paediatrician Clinic', 'Rapid Review Home Nursing Service' and 'GP Telephone Advice Line'.

- Community Asthma Education Service: Improving health outcomes through health promotion and education for children with asthma and their families and the training and up-skilling of all health providers.

Innovative methods for sustainability

- Clinical Scholars in Evidence-Based Practice Program: Developing clinical champions and creating a supportive culture for EBP by seconding clinicians to the HFK team, and providing training, supervision and support to undertake an aspect of HFK work and learn skills in EBP.

Guideline development 2006

Building on the expertise gained through the HFK program, the CCE team are currently developing additional world-first evidence-based guidelines:

- 'Management of enteral feeding in preterm infants' is nearing completion. It is expected this guideline will decrease variation in care and significantly reduce length of hospital stay for these babies. In addition to the core CCE team, 20 clinicians and 30 parents have been involved in the guideline development process.
- 'Peri-operative management of diabetes in cardiothoracic and vascular surgery' is well underway and has recently been extended to include care in ICU. A Southern Health Diabetes Fellow is working with the CCE team as a Clinical Scholar in EBP to develop and implement the guideline.
- In partnership with the Australasian Cochrane Centre, the CCE has played an integral role in development of the NHMRC National Heart Foundation Australian Guidelines for Absolute Risk Assessment for Cardiovascular Disease to be implemented in general practice.

Evidence reviews and evidence-based practice resources

In 2006, CCE staff continued to provide reviews of the best available evidence to meet the needs of clinicians and managers. These reviews are available on both the CCE and HFK Paediatric Evidence Centre websites. Throughout the year, the Centre receives inquiries from clinicians, educators and researchers around the world requesting use of our materials for their own teaching programs or personal applications. The workbook Evidence-Based Answers to Clinical Questions for Busy Clinicians is particularly sought after.

Monash Ageing Research Centre (MONARC)

MONARC was established in 1999 as a collaboration between Monash University and Southern Health to promote applied clinical research of the ageing population with the goal of rapidly incorporating such research into everyday practice. The Centre consists of three divisions:

- Academic Unit of Geriatric Medicine
- Geriatric Research Unit
- Aged Mental Health Research Unit

2006 Highlights and achievements

MONARC has had a successful and productive year in 2006:

- The Centre of Clinical Research Excellence (CCRE) in Gait Research
- MonRAS Initiative
- Collaboration with The University of Newcastle on Tyne
- Undergraduate Teaching at Monash University

The Centre of Clinical Research Excellence (CCRE) in Gait Research

MONARC's Geriatric Research Unit is a partner in the CCRE in Gait Research together with Melbourne University and The Murdoch Institute. The Centre grew significantly in 2006 with the recruitment of a number of new staff and students. Projects undertaken in the gait laboratory at Kingston Centre also increased throughout the year and the CCRE has introduced a clinical fellowship program to encourage and nurture the development of research skills in clinicians. Dr Helena Ng was the 2006 recipient of a clinical fellowship to study the effects of footwear in patients following stroke.

MonRAS initiative

MonRAS (Monash Research for an Ageing Society) is an initiative of Monash University to support and encourage development of research into Ageing across faculties whilst maintaining a University wide focus. Members of MONARC have been involved in this initiative from its inception and in 2006 exhibited the benefits of this collaborative effort – including an increased number of grant applications and

grant successes with research partners across the university. MONARC researchers were represented on 2 of the 3 research support grants provided by Monash University to support the MonRAS initiative. Dr Chris King was a member of a Peninsula Health group successful in obtaining a Department of Health and Ageing grant to study community support for people with dementia living in the community, and is collaborating with the Department of Aged Care Medicine on future grant applications.

Collaboration with The University of Newcastle on Tyne

Monash University is developing a strategic collaboration with the University of Newcastle on Tyne across three areas of research: Stem cells, neurosciences and ageing. Professor Barbara Workman was a member of a team of Monash University researchers who met with a complimentary team from the University of Newcastle on Tyne at Monash Prato in February 2006 to discuss and progress research collaborations.

Undergraduate teaching at Monash University

MONARC staff have been very involved in the development and delivery of the MBBS undergraduate curriculum and contribute to the Medicine Course Management Committee. Dr Ian Presnell is co-chair of the year 1 management committee and Professor Barbara Workman is co-chair of the year 5 management committee. Staff from MONARC teach throughout all years of the course, including clinical teaching in basic skills development, medicine-law tutorials, psychiatry placements, aged care placements, community partnerships, and epidemiology. They have also provided extensive assistance in developing the Monash Malaysia MBBS undergraduate course, in addition to the course operated at the Monash Gippsland campus. Associate Professor Darzins is a member of the Theme 1 committee, responsible for the curriculum in personal and professional development.

Jean Hailes Foundation Research Centre

The Jean Hailes Foundation Research Centre is led by Professor Helena Teede and integrates with the Southern Health Diabetes Research Unit. The not-for-profit organisation provides a unique response to the needs of women through excellence in research, community and professional education and clinical care - where research findings are translated into practical health and lifestyle approaches for women and their healthcare professionals. The Centre focuses on areas that improve the quality and longevity of life for women, with an emphasis on community health outcomes.

Established in 2005, this new research group has seen a productive year in 2006 attracting increased grant funding (9 successful applications) and expanding staff numbers to create a multidisciplinary team involving 6 postgraduate students, 4 postdoctoral fellows and several research nurses from a range of clinical backgrounds. Under the leadership of Professor Teede, the group is aiming to recruit further senior staff with public health expertise, whilst continuing to broaden and strengthen collaborative ties.

Research projects within the Centre follow the continuum of adverse lifestyle, obesity/insulin resistance, polycystic ovarian syndrome, gestational diabetes, pre-diabetes, diabetes, cardiovascular disease, with the focus on women's health:

In 2007, the group aims to further increase research productivity through additional successful grant submissions, expansion of the research team, consolidation of the Centre's reputation in PCOS research, development of programs on risk perception, diabetes and renal disease, and the establishment of a diabetes evidence centre (together with CCE).

2006 Highlights and achievements

- Integration with Southern Health Diabetes Research Group
- Professor Teede accepted Chair for Women's Health, Monash University
- Ongoing Media Interactions
- Education Initiatives

Integration with Southern Health Diabetes Research Group

In 2006, the Jean Hailes Foundation for Women's Health united with the Southern Health Diabetes Research Group within MIHSR, and has already achieved a number of research highlights throughout the year.

Professor Teede accepted Chair for Women's Health, Monash University

In 2006, Professor Teede successfully applied for the Jean Hailes/Monash University Chair of Women's Health. The appointment establishes Professor Teede as the youngest professor in Medicine at Monash University, and exemplifies the university's commitment to research and the effective translation of women's health at a community level. Professor Teede will continue her clinical practice in addition to her role as Research Director.

Ongoing Media Interactions

Research staff have been actively involved in the translation of research outcomes through collaboration with the JHF media unit, aiming to raise awareness of women's health in Australia through targeted national media campaigns. Members of the JHF work with well-established national contacts including freelance journalists for major women's magazines such

Continuum

Early disease states
Exercise / healthy lifestyles,
Medical therapy

Self management
Prevention complications
Health Services Research

Adverse
lifestyle/
inactivity

Obesity/
Insulin
resistance

Polycystic
ovarian
syndrome

Pre-diabetes,
Gestational
diabetes

Diabetes

Cardiovascular
disease

Public Health
Health Promotion
Health related behaviours research

Prevention
Cardiovascular disease

as The Australian Women's Weekly, Madison, Notebook, New Idea and Women's Day and for national daily print publications including the Medical Observer, Australian Family Physician and Australian Doctor. The Age has supported the Foundation through a daily free awareness campaign.

JHF has an active media unit and is funded through a federal government grant to interface between the media and community ensuring the accurate translation of research. During 2006, The Jean Hailes Foundation achieved media segments on a range of women's health issues including cardiovascular disease in women, diabetes and pre-diabetes, gestational diabetes, gynaecological health conditions for women, menopause, polycystic ovarian syndrome, bone health, emotional health, bioidenticals, obesity, nutrition, perimenopause, complementary therapies, the pill and libido, with Professor Teede and her research team providing the majority of expert commentary in these media interactions.

Education initiatives

Together with the JHF education unit, the JHF research team plays an integral role in the translation and interpretation of research into educational resources and in the dissemination of this information through education. A number of national programs were established in 2006 targeting both the community and multidisciplinary healthcare providers:

- Direct education initiatives for community members from urban, rural and remote areas.
- Development of community targeted health facts sheets on a range of Women's Health issues.
- Contributions to the national bi-annual Jean Hailes Foundation magazine (75,000 copies distributed to the community).
- Development and provision of content for numerous JHF websites (29 million hits/ year).

Turning Point Alcohol and Drug Centre (affiliation)

Turning Point Alcohol and Drug Centre is a treatment and research centre promoting the health and wellbeing of individuals and communities living with and affected by alcohol and drug-related harms. Since being established in 1994, Turning Point has led the translation of research into policy and practice at local, national and international levels. In order to effectively respond to emerging issues, the Centre

incorporates staff from a range of professional backgrounds and collaborates with numerous organisations across the research, health, education and community services sectors. Professor Donald Campbell, MIHSR Director, currently acts on the Turning Point Research Advisory Committee, and is seeking further collaborative links.

Senior Research Fellow Associate Professor Paul Dietze, has a conjoint appointment between Turning Point and MIHSR. In 2006, Associate Professor Dietze was successful in receiving a NHMRC grant funding a study of the risk factors for ecstasy and related drug overdose. The project, due to commence in 2007, involves collaborators from a number of institutions including St Vincent's Hospital, The Alfred Hospital and The University of New South Wales.

e-health Research Unit

The mission of the e-Health Research Unit (EHRU) is to perform world-leading multidisciplinary collaborative research in partnership with government, industry and the community to create demonstrable health improvement through innovations in electronically enabled systems of health care.

The EHRU aims to deliver innovations in Information and Communications Technology (ICT) that significantly improve the efficiency, effectiveness, quality, safety and access to health care in Australia and internationally. These objectives are achieved by bringing together leading researchers in health and medicine, pharmacy, information technology, engineering, economics and law from multiple faculties across the University.

The EHRU performs multidisciplinary research in health application services and enabling technologies for sharing and managing the complete quality cycle of integrated care across the continuum of health service providers and consumers. These ICT-enabled services include evidence-based decision support, disease management, wellness monitoring, consumer and provider education, quality and audit, health data linkage, epidemiological research, and health services management.

Research programs involve innovations in adaptive e-business technologies that can account for the autonomy and heterogeneity of health service providers, the incompleteness of information, and the rapid rate of health care innovations. Programs within the EHRU also include research into the knowledge content necessary to build these application services (e.g. therapeutic guidelines and integrated care

plans), developing innovations in health care, knowledge representation, information analysis, new economic and legal models for the health system, providing system-level evaluation frameworks, as well as new business models and health policies.

2006 Highlights and achievements

2006 was the inaugural year of the e-Health Research Unit. Its success was highlighted by the awarding of a number of grants, including the following projects:

- Intelligent Collaborative Care Management: An ARC Linkage Grant with British Telecom
- Using Data to Improve the Quality of Health Care: An NHMRC grant for Health Services Research
- The Southern Managed Health Network: A grant from the Department of Health and Ageing for investigating Managed Health Networks.

Health Informatics Education Unit

The Health Informatics Unit provides teaching in health informatics to Graduate Certificate and Graduate Diploma students at Monash University. Topics covered include electronic health records, project management for health professionals, health knowledge representation and management, and research methods. Staff members are also represented on a number of postgraduate committees within the University.



The HORU team at work

Health Operations Research Unit

The Health Operations Research Unit was formed in mid 2006 in recognition of the need to better define how data and systems analysis skills could best be organised within MIHSR to work with Southern Health as well as the need to define the CCE in a more focussed manner which better recognised its own activity and skills.

Operations research is an interdisciplinary science which deploys scientific methods to decision making in complex real-world problem concerned with coordination and execution of operations within an organisation. The HORU will focus on strategic planning, operational decision making and system design in healthcare delivery in the areas of work practice and workflow and safety and quality for health care delivery from a systems perspective.

The vision for the HORU is to make a valued contribution to the improvement of patient care through the application of operations research to hospital systems. The mission of the HORU is to undertake specific (applied) operations research projects to deliver safe, efficient and effective systems of health care in partnership with Southern Health and external partners, and to disseminate these skills to Health Service staff.

Our core staff consist of Professor Don Campbell (Director), Keith Stockman (Manager) and Fiona Dickson with Kelly Allen as Research Project Officers. Don brings his clinical background as a hospital-based general and respiratory physician and health services research skills; Keith contributes consulting experience in health systems change design and implementation and a background as a hospital administrator and microbiologist; whilst Fiona is a senior project officer with a clinical background as a physiotherapist and extensive health services research experience; and Kelly is a recent graduate of the Public Health Traineeship Scheme conducted by the Victorian Government Department of Human Services.

During the latter half of 2006, the HORU embarked on specific Southern Health related projects and a major project in collaboration with a Southern Health clinical partner:

Three Aged Care Project

- Rehabilitation supply and demand
- Sub-acute inpatient capacity and wait times
- Decision cycle time in Sub-acute

Two adverse event case control projects

- Fracture NOF
- Neonatal Deaths

One major project in collaboration

- Neonatal bed planning

In addition a major external contract to evaluate a chronic disease management program commenced.

Healthy Ageing Research Unit (HARU)

The Healthy Ageing Research Unit was established in September 2006 following the appointment of Professor Colette Browning to MIHSR in May 2006, with a vision to conduct pre-eminent internationally oriented research in health ageing. Professor Browning was recruited to Monash University to facilitate ageing research as part of the Monash Research for an Ageing Society (MonRAS) strategic initiative, and Dr Jane Sims joined the University in June 2006.

HARU manages a number of grants and initiatives in the research field of ageing including the ARC/NHMRC Research Network in Ageing Well (Healthy Ageing Program), the Melbourne Longitudinal Studies on Healthy Ageing Program (MELSHA), the Environmental Factors in Physical Activity and Ageing Program, the Cultural Conceptualisations of Successful Ageing Program, and the Sensory Disability and Ageing Program.

2006 Highlights and achievements

- The Monash China Ageing and Primary Health Care Research Program
- Comparative Reviews of Chinese and Australian Health Policies and Services
- The Melbourne Longitudinal Studies on Healthy Ageing Program (MELSHA)

The Monash China Ageing and Primary Health Care Research Program

Developed by Professor Browning, Professor Shane Thomas (Primary Health Care) and Dr Yang Hui (Primary Health Care), the program aims to conduct cross-national research between China and Australia in the area of ageing and primary care, whilst fostering staff and student exchanges. Other active participants include Professor Leon Piterman (Professor of General Practice), Dr Farzad Sharifian (Languages, Cultures and Linguistics) and Dr Jane Sims. Over 2006, the group has developed a number of exciting research collaborations with Chinese colleagues.

Comparative reviews of Chinese and Australian health policies and services

Professors Browning, Thomas and Yang recently joined the editorial boards of the Chinese Journal of General Practice, and are arranging a joint publication series between the Australian Health Review and the Chinese Journal of General Practice. The series will consist of comparative reviews of Chinese and Australian health policies and services by leading Australian and Chinese researchers in a range of areas, and will be simultaneously published in the respective languages of each journal.

Together with staff from the School of Sociology at Peking University, the Unit has also recently finalised a series of studies looking at cultural determinants of concepts of healthy ageing. Under the direction of Professor Browning and with input from Farzad Sharifian, a cultural socio-linguist, a number of linked studies will be established involving Australians, Chinese Australians and Chinese in China to investigate cultural and situational influences. This expands on work recently completed for the government who wish to use community expectations of successful ageing to assist with program and policy formulation.

The Melbourne Longitudinal Studies on Healthy Ageing Program (MELSHA)

The MELSHA program has tracked the outcomes of 1,000 Australians for 12 years who, at the commencement of the study, were community dwelling and aged 65 years or older. During 2006, three principal figures of the program (Browning, Hal Kendig from University of Sydney and Shane Thomas) agreed to jointly pursue a number of China-related study extensions.

In partnership with Chinese colleagues, the study will be extended into mainland China, enabling cross-cultural validation of key findings from the MELSHA program and determination of the effects of immigration and other factors upon successful ageing. The cultural basis of the MELSHA program will also be expanded locally by collecting an Australian based cohort of Chinese Australians and other cultural groups. The Chinese Research Centre of Ageing (CRCA) has granted access to its 68 longitudinal data sets for the purpose of benchmarking MELSHA's findings.

MELSHA is also one of 9 longitudinal studies contributing to a NHMRC funded Ageing Well Ageing Productively Program Grant. The project draws together data from these Australian Longitudinal Studies of Ageing including 53,484 participants, and will be used to identify factors capable of preventing disease, reducing ill-health, and promoting engaged and successful ageing for Australians. The focus is on conditions that significantly contribute to the burden of disease including cognitive decline and dementia, sensory impairment, impairment in mobility and common mental disorders such as depression.

Gender and Medicine Unit

The Gender and Medicine Unit is dedicated to locating, documenting and changing those areas of medical knowledge and practice when the experience of one sex or the other has not previously been included. The Unit is also responsible for incorporating a unique gender-based perspective throughout Monash University's medical curriculum. Activities within the Unit seek to identify where gender has an impact on health presentations, interventions and outcomes.

The Unit's vision is to see Monash leading the way in this area of research, bringing international programmes of gender competence into medicine and health sciences education and research in Australia. The immediate goal of the Unit is to develop a team of people funded to achieve these objectives.

2006 Highlights

- World Health Organisation Working Group
- Australian Medical Council Question Writing Workshops
- First World Congress on Gender Specific Medicine
- International Visiting Scholars
- National and International Collaborations
- International Collaborations
- Education and Gender
- Development of Internet Site

World Health Organisation Working Group

Operated through the WHO Department of Gender, Women and Health, Dr Wainer attended the first meeting of the working group on "Integrating gender in health science curriculum" in Geneva, December 2006, as an individual technical expert. Her participation was fully funded by WHO and provided the opportunity for Dr Wainer to offer her expertise at an international and highly prestigious level.

Australian Medical Council Question Writing Workshops

The Australian Medical Council Question Writing Workshops are responsible for generating multiple choice questions used in the examination of International Medical Graduates wishing to practice in Australia and Canada. Dr Wainer is a member of the Writing Workshops.

The First World Congress on Gender Specific Medicine

Over 300 participants from over 30 countries attended the world-first conference in Berlin, Germany, including representatives from the basic and clinical research sciences, social sciences, medical professionals and students. The research of the Gender and Medicine Research Unit was represented by a plenary presentation and a session was chaired by Ms Ann-Maree Nobelius.

International visiting scholars

During 2006, the Unit was honoured to host a visit from Professor Karin Schenck-Gustafsson, Chief Consultant from the Department of Cardiology at The Karolinska University Hospital in Sweden. Professor Schenck-Gustafsson was the director and founder of the first Centre of Gender Medicine (Karolinska Institutet) and during her visit gave presentations to the cardiology and medicine units at Southern Health, as well as the Monash Institute of Health Services Research and The Key Centre for Women's Health and Society at the University of Melbourne.

International collaborations

Dr Wainer is a member of the Wonca (World Organisation for Family Doctors) Working Party on Women and Family Medicine, which she founded after initiating a women's working group at the Wonca meeting in Dublin, 1998. Since this time, Dr Wainer has been an active member of the group, and was invited during 2006 as a fully funded participant in the working group's strategic workshop held in Hamilton, Canada. (see <http://www.womenandfamilymedicine.com>)

Education and gender

Over the past year, the Gender and Medicine Unit has developed and delivered educational material focussing on post-graduate professional development. These have included:

- Centre for Medical and Health Sciences Education. Graduate Certificate of Health Professional Education Workshop: Gender and Medicine
- Monash Institute of Health Services Research Autumn Seminar Series (May): Clinical Utility of Gender Concepts in Medicine
- Monash Institute of Health Services Research Staff Seminar: Gendered Knowledge
- Monash Institute of Medical Research Seminar: Creating Medical Knowledge – Science and Gender
- Monash Institute of Health Services Research Spring Seminar Series: Working with Cultural Diversity in the Clinical Context (together with Dr Milica Markovic).

In addition to the above, the first iteration of the development and implementation of gender concepts into the medical curriculum (MBBS) at Monash was completed. Many of the cases developed as primary teaching tools have a gender perspective and others have been developed to explore

gender explicitly. All Year 1 and 2 tutors for the MBBS are trained to deliver gender competent teaching. Dr Wainer also contributes to MBBS Course curriculum committees in her role as Convener of the Gender Working Party of the Medicine Course Management Committee 2005-2006.

Development of internet site

<http://www.med.monash.edu.au/gendermed/>
<http://gendermed.med.monash.edu.au/>

In conjunction with Queens University, Ontario, Canada, the Unit established a new internet site in April 2006 for promoting international collaborations on mainstreaming gender into medical and health science curriculum.

Biostatistics Service

The Biostatistics Service offers biostatistical support and training of a high international standard to Southern Health, Monash University and multiple external customers. Head of the Service, Associate Professor Damien Jolley, has been the recipient of The Medical Journal of Australia Wyeth Prize for Clinical Research and is Director of the Scientific Committee of International Databases of Multiple Sclerosis, which monitors patients and their treatment. During 2006, the Service continued to provide consulting services to clinical staff at Southern Health and related groups.

2006 Highlights and achievements

- Victorian Public Health Award 2006 for Research Innovation
- Commissioned Research Projects
- Collaborative Research Projects
- Clinical Research Support
- Teaching

Victorian Public Health Award 2006 for Research Innovation

VicLANES was a multilevel study of individual, household and environmental information from 4913 households in 50 areas across Melbourne, Australia, collected via surveys and environmental audit data. The study was a collaboration between Service Director Associate Professor Jolley together with colleagues from University of Melbourne, Deakin University and Queensland University of Technology.

In recognition of this work, the project's investigators were awarded the Victorian Public Health Award for Research Innovation at the 2006 Victorian Public Health Awards from the Department of Human Services, Victoria. The award was presented by the Minister of Health, Hon Bronwyn Pike, in a ceremony at Federation Square.

Commissioned research projects

During 2006, members of the Biostatistics Service were involved in a number of large commissioned research projects including:

- Health insurance intervention evaluation: Long-term quantitative evaluation of a member support service intervention implemented by a large health insurance company.
- Volume Surgery Meta-analysis: Commissioned by The Department of Human Services to review literature on volume and specialist surgery in cancer treatment (together with ACC).
- Guidelines for Assessment of CVD Absolute Risk: Commissioned by The National Health Foundation to review literature on guidelines for assessment of cardiovascular disease absolute risk (together with ACC).

Collaborative research projects

Throughout the year, the Service continued to establish and maintain numerous local, national and international collaborative partnerships and programs, providing statistical services to:

- Cochrane Consumer and Communication Review Group
- VicLANES (examining environmental influences on physical activity and nutrition)
- AusDiab and Australia@Risk (Australian diabetes prevalence study and incidence cohort)
- MS Base (Professor Jolley is Director of the Scientific Committee of the International Database of Multiple Sclerosis Patients and Their Treatment)
- Evaluation of Public Health Campaigns to Prevent Back Pain
- "MaTES", Andrology Australia (cross-sectional survey of reproductive health in Australian males)
- Hookworm Intervention in Vietnam

Clinical research support

In 2006, the Service provided biostatistical support to a range of clinicians from Southern Health and other organisations. Projects in 2006 included:

- Appraisal of studies of unexpected mortality in emergency departments (Prof J de Campo)
- Systematic review of studies to reduce problem gambling (Prof M Oakley Brown)
- Analysis of clinical trial of wound care in nursing homes (Centre for Health Economics)
- Management of randomised clinical trial of Tai Chi in retirement villages in Victoria (MUARC)
- Evaluation of palliative care resource allocation model (DHS Victoria)
- Design of blood product tracking sampling system (Red Cross Blood Bank Australia)
- Analysis of predictors of eggs fertilization success (Monash IVF)
- Diagnosis of sleep apnoea in children (MMC Children's Sleep Unit)
- Survival in patients with hepatocellular carcinoma
- Patterns of antenatal corticosteroid prescribing (Prof Euan Wallace)
- Sampling for glomerular filtration rate in persons with diabetes - AusDiab (Dr K Polkinghorne)
- Risk factors for infection following bowel resection (E Gillespie)
- Analysis of RCT of omega-3 fatty acid supplementation for men with HIV (Dr I Woolley)
- Cohort study of infection and clinical outcomes following splenectomy (with Dr I Woolley)
- A RCT of pain control following colorectal surgery (Prof A Polglase)
- Meta-analysis of Vitamin E and mortality (Prof J McNeil)

Teaching

Throughout the year, the Biostatistics Service contributed to undergraduate teaching in the Monash MBBS medical curriculum (Population Health and Evidence-Based Clinical Practice), and Health Science. Postgraduate lectures were given to Master of Public Health Epidemiology and Graduate Diploma in Epidemiology students. Professional education was also provided through the MIHSR Autumn Short Courses for Health Professionals, including Introduction to Biostatistics, Introduction to Stata Advanced, and Research Ethics and Clinical Trials. In addition, training in Epidemiology and Biostatistics was externally provided to staff from CSL Limited.

Health Sociology Education Service

In collaboration with other University departments, the Institute maintains responsibility for teaching the theme of Population Health, Society and Illness throughout the Monash MBBS undergraduate degree. The goals of this theme are to develop a student's ability to deal with broader societal and population health issues through the application of rigorous enquiry frameworks, including use of the "sociological imagination". Dr Aroni performs teaching in the area of health knowledge and society to first year MBBS students, and also undertakes independent research in collaboration with external partners, in addition to other members of MIHSR.

The Health Sociology group continues to develop collaborative work that produces effective multidisciplinary and trans-disciplinary studies which provide best evidence for improving the practice of health professionals, policy makers and members of the public, and enhance research and teaching at all levels.

2006 Highlights and achievements

- Grant to Support Collaborative Links with Monash Malaysia
- Development of Dietetics and Nutrition Network
- ABC Radio Interview
- Teaching Highlights

Grant to support collaborative links with Monash Malaysia

Throughout 2006, Dr Aroni developed strong collaborative links with a number of colleagues at Monash Malaysia who have both clinical and research expertise in chronic disease management and technology assessment. The Faculty of Medicine, Nursing and Health Sciences instituted a new grant scheme to assist in the development of such research collaborations between the Malaysia campus and other Monash sites. The Health Sociology group was fortunate to receive one of these inaugural grants to develop and test culturally appropriate research tools for use in subsequently larger studies.

Development of Dietetics and Nutrition Network

Collaborations with the Dietetics and Nutrition Departments at each clinical site of Southern Health were strengthened throughout the year to develop a multi-disciplinary team investigating key clinical concerns throughout the network. The group aims to use research to provide evidence for improving the health outcomes of all patients and develop a strong research team which will seek national funding for major research projects. The inaugural project of the group will examine both the barriers and enablers of optimal implementation of nutrition screening tools in the clinical setting.

ABC Radio interview

Dr Aroni was interviewed by ABC Radio News regarding her paper on the miscommunication that can occur between doctors and patients when describing asthma exacerbation and its potential impact on subsequent decision-making regarding treatment regimens and optimal partnering with patients in their management of asthma.

Teaching highlights

A number of teaching accomplishments were achieved during 2006. The Health, Knowledge and Society program of the MBBS was revised and saw the development of a new Tutor Handbook and the preparation of a monograph for use by students. 2006 was also the inaugural year for the Student Group Tutorial Presentation Award of \$1600, kindly supported by The Monash University Bookshop.

Dr Aroni continued throughout the year to teach in the MIHSR Short Courses Series, which included topics such as in-depth interviewing, qualitative research methods, conducting focus groups, qualitative data analysis and questionnaire design. Evaluative feedback from these units was extremely positive.

Evidence Based Clinical Practice Education Service

Evidence Based Clinical Practice (EBCP) aims to integrate the best available evidence with clinicians' expertise and patient values. MIHSR is responsible for coordinating and delivering the EBCP component under the Population Health, Society and Illness theme for the Monash MBBS undergraduate degree. Within the realm of this theme, EBCP is delivered as a year long subject to both 3rd and 4th year MBBS students. The subject aims to equip students with the skills to identify, appraise, integrate and evaluate the best available evidence relevant to their clinical training and practice.

In 2006, the EBCP subject was successfully delivered to over 240 3rd year students across six metropolitan and five rural sites, and as an online subject to over 200 4th year students across Victoria. The EBCP course will also be a part of the new graduate entry MBBS degree due to commence in 2008.

Throughout 2006, staff from the unit collaborated extensively with colleagues from Monash Malaysia in Kuala Lumpur and Johor Bahru, and 2007 will see EBCP introduced as part of the new MBBS degree offered by Monash Malaysia. In addition, The Institute runs the highly popular 'Autumn' and 'Spring' postgraduate short courses on EBCP. This course is available to all Southern Health employees and external health professionals.

Research grants and service contracts

Improving the care for people with acute low back pain by allied health professionals: Cluster randomised controlled trial

Green S, McKenzie J, Grimshaw J, Mortimer D, Keating J, Walker B
NHMRC Project Grant
Total: \$653,689
(Awarded 2006 for Funding Period 2007-2009)

Australasian Cochrane Centre Core funding

Green S
Commonwealth Department of Health and Ageing
2006: \$492,665
(Funding Period 2004 -2008)

Implementing clinical practice guidelines in general practice: Cluster randomised controlled trial

Green S, Spike N, Schather P, Grimshaw J, McKenzie J, O'Connor D, Mortimer D
NHMRC Project Grant
Total: \$426,000
2006: \$204,250
(Funding Period 2005-2007)

Clinical and economic measures to evaluate disease status and progression in Parkinson disease

Morris M, Iansek R, Jolley D, Watts J, Campbell D
The National Parkinson Foundation Project Grant
Total: \$395,330
(Awarded 2006 for Funding Period 2007-2009)

Gender, alcohol and culture: An international study

Dietze P, Room R, Chikritzhs T, Jolley D, Ackland M, Vaughan L
NHMRC Project Grant
Total: \$330,000
2006: \$120,675
(Funding Period 2006-2008)

Development of an evidence-based guideline to establish oral feeding in preterm infants to reduce length of stay and variability in care in Special Care Nurseries

Harris C
William Buckland Foundation
Total: \$148,500
2006: \$98,000
(Funding Period 2006-2007)

Development of new models of care for children with chronic conditions and complex needs

Harris C
Southern Health Primary Care Program
2006: \$120,000

National vascular disease prevention alliance development of evidence-based practice guidelines for assessment of cardiovascular absolute risk for consideration by the NHMRC Health Advisory Committee.

Green S, Jolley D, Harris C, Campbell D, Misso ML
The National Heart Foundation of Australia Contract
Total: \$69,849
2006: \$65,455
(Funding Period 2006-2007)

A pilot study of chronic disease management in ethnically diverse communities: Developing methodological rigour

Aroni R, Kardivelu A, Abramson M, Thien F, Teede H, Sadasivan S, Yasin S, Zaini A

Monash Strategic Grant: Malaysia Collaboration Development Grant

Total: \$66,500
(Awarded 2006 for Funding Period 2007)

Australasian Cochrane Centre Policy Liaison Initiative

Green S
Commonwealth Department of Health and Ageing
2006: \$59,574

Health and service use in older Australian Chinese

Browning C, Thomas S, Yang H, Jolley D
Monash University Strategic Grants Scheme
Total: \$59,000
(Awarded 2006 for Funding Period 2007)

Review of successful ageing

Browning C, Thomas S
Department of Human Services Aged Care Division Research Consultancy
Total: \$55,000
2006: \$12,000
(Funding Period 2006-2007)

Best practice training for female general practice registrars

Wainer J
Victorian Medical Alliance
2006: \$54,000

China ageing and primary care research program

Monash University International Infrastructure Grants Scheme
Thomas S, Browning C, Yang H, Piterman L
Total: \$50,000
(Awarded 2006 for Funding Period 2007-2008)

Is continuous quality improvement effective: Improving our ability to test CQI as an intervention to improve management of chronic disease

Green S, Stoelwinder J, Piterman L
Monash University Faculty of Medicine, Nursing and Health Sciences Strategic Grant
2006: \$50,000

Establishment of a consumer participation program in a tertiary paediatric hospital

Harris C
William and Vera Houston Memorial Trust
2006: \$43,050

Barriers encountered by men seeking ED treatment

Green S, Ilic D
Andrology Australia
2006: \$42,714

Secret men's business: Understanding the psychosocial impact of male infertility upon men and their partners

Green S, Ilic D
Andrology Australia
2006: \$37,114

Effectively communicating the risks associated with prostate cancer treatment

Ilic D, Green S, Hill S
ANZ Trustees
2006: \$20,000

Services and programs for an ageing society: Perceived needs, types of services and models of care

Monash Research for an Ageing Society Research Support Scheme
Browning C, Roberts D, Sharifian F, Morse C, Gerber L, White N, Workman B
Total: \$19,000
(Awarded 2006 for Funding period 2007)

Teaching into MBBS curriculum

Wainer J
Monash University Faculty of Medicine, Nursing and Health Sciences
2006: \$10,000

Travel support for Geneva workshop attendance

Wainer J
World Health Organisation
2006: \$4,000

A national clinical trials register

Simes J, Ghersi D, Stockler M, Keech T, Green S, Henderson-Smart D, Krum H, Jennings G
NHMRC Enabling Grant
(Funding Period 2005-2010)

Physiotherapy treatment of shoulder pain

Bennell K, Buchbinder R, Green S, Harris A, Forbes A
NHMRC Project Grant
(Funding Period 2004-2007)

Research Grants and Service Contracts affiliated with MIHSR staff

The external evaluation of Pharmaceutical Benefits Advisory Committee (PBAC) submissions

Jolley D, Buchbinder R, Harris A
Department of Health and Ageing Contract
Total: \$2,905,332
2006: \$726,333
(Ongoing from 2005)

Using data to improve the quality of health care

Cameron P, Georgeff M, et al
NHMRC Health Services Research Round 3
Total: \$2,700,000
(Awarded 2006 for Funding Period 2007-2011)

ARC/NHMRC Research Network on ageing well

Kendig H, Browning C, Bartlett H, Boldy D, Luszcz M, Broe T, Richardson S, et al
ARC and NHMRC Network Grant 2004
Total: \$2,500,000
2006: \$500,000
(Funding period 2004-2009)

Learning how to age well from Australian longitudinal studies of ageing

Anstey K, Byles J, Luszcz M, Browning C, Harding A, Mitchell P, Steel D, Butterworth P, Healy J, Cumming R, Brown L, Booth H
ARC and NHMRC Ageing Well Ageing Productively Program
Total: \$2,000,000
2006: \$250,000
(Funding period 2006-2011)

Tai Chi for independent living: RCT of efficacy of Tai Chi in delaying disability among older people

Day L, Flicker L, Hill K, Jolley D, Segal L
NHMRC Project Grant
Total: \$869,450
2006: \$303,150
(Funding Period 2006-2008)

Preventing falls and improving mobility in Parkinson disease

Morris ME, Iansek F, Huxham F, McGinley J, Menz H, Watts J, Murphy A
Michael J Fox Foundation
Total: \$800,000

Building evidence based research and practice in South East Asia: Impact on pregnancy and childbirth care and outcomes

Henderson-Smart D, Lumbiganon P, Green S, Crowther CA, Festin M, Ho J, Mohammed H
NHMRC and Wellcome Trust
Total: \$594,845
2006: \$279,380
(Funding Period 2004-2008)

Intelligent collaborative care management

Georgeff M, Campbell D, Webb G, Schmidt H, Thompson
SARC Linkage Grant
Total: \$480,000
(Awarded 2006 for Funding Period 2007-2009)

The role of spirometry in managing chronic respiratory diseases in general practice

Abramson MJ, Thien F, Suleiman N, Side E, Aroni R
NHMRC General Practice Clinical Research Grant
Total: \$477,000
2006: \$204,559
(Funding Period 2005-7)

Non-invasive electrical nerve stimulation to improve healing diabetic peripheral neuropathy

Khalil Z, Darzins P, Ogrin R, Teede H
National Health and Medical Research Council
Total: \$345,075

The risk factors for ecstasy and related drug overdose: A case crossover study

Dietze P, Munir V, Johnston J, Smit D, Fry C, Degenhardt L
NHMRC 2006 Project Grant
Total: \$325,000
(Awarded 2006 for Funding Period 2007-2008)

Treatment of depression in nursing homes

O'Connor D
Beyondblue
Total: \$240,000

Greek and Italian residents with dementia in aged care: Language use, psychiatric medication, quality of life and satisfaction with care

O'Connor D, Runci S
NHMRC Dementia Research Grant
Total: \$187,303
(Awarded 2006 for Funding Period 2007-2009)

Translation of evidence based research

Teede HJ
Monash University Infrastructure and Establishment Grant
Total: \$150,000
2006: \$50,000
(Funding Period 2007-2009)

The Southern Managed Health Network

Schattner P, Georgeff M, et al
Broadband for Health (Managed Health Networks)
2006: \$100,000

Multicentre Industry Trial

Teede HJ
Organon
Total: \$95,000
(Funding Period 2006-2007)

Healthy mums, healthy kids: Prevention of weight gain in young Australian women

Teede HJ, Lombard C

William Buckland Trust
Total: \$92,000
2006: \$60,000
(Funding Period 2006-2007)

Diabetes and cardiovascular disease in renal failure

Zoungas S, Teede H
RACP Grant
2006: \$50,000

Physical activity and the built environment in CALD women: Follow up survey

Bird S, Browning C, Feldman S, Thomas S, Seedsman T
Victorian Health Promotion Foundation
2006: \$50,000

Risk perception and barriers to behavioural change in polycystic ovarian syndrome

Teede HJ, Deeks A
L.E.W. Carty Charitable Research Fund
2006: \$50,000

Risk perception of diabetes and cardiovascular disease

Teede HJ, Deeks A
Helen MacPherson Smith Trust
2006: \$50,000

Re-engaging “lost to follow up” adolescents with Type 1 Diabetes Mellitus (T1DM) managed in a tertiary setting

Rodda C, Hay M, Clarke D, Teede J
Diabetes Australia Research Trust (DART) Grant
Total: \$49,700
(Awarded 2006 for Funding Period 2007)

Multicentre Industry Trial

Teede HJ
Boehringer
Total: \$45,000
(Funding Period 2006-2007)

Multicentre Industry Trial

Teede HJ
Pfizer
Total: \$45,000
(Funding Period 2006-2007)

The significance of walking changes in ageing and Parkinson disease

Huxham F
John and Thirza Daley Charitable Trust
2006: \$30,000

Improving outcomes from major surgery in elderly patients

Rosenfeldt F, Workman B, Manderson L, Pepe S
MonRAS Research Support Scheme
2006: \$20,000

The effectiveness of unilateral and bilateral electroconvulsive therapy (ECT) in Victorian aged mental health services

O'Connor D, Gardner B
John Cockayne Memorial Aged Care Research Fund
2006: \$15,000

Evaluation of paediatric guidelines

Wilkinson F
Windermere Foundation
Total: \$15,000
(Awarded 2006 for Funding Period 2007)

The biomechanics and motor control of obstacle negotiation during walking in people with Parkinson disease

Murphy A
John Cockayne Memorial Aged Care Research Fund
2006: \$14,240

Does an experiential education intervention influence the attitudes of health personnel towards older patients?

Workman B, Darzins P, King C
John Cockayne Memorial Aged Care Research Fund
2006: \$11,277

New models of care in diabetes

Teede HJ
Investigator Initiated Industry Funded Grant
2006: \$8,500

Oxidative stress, insulin resistance and hypertension

Zoungas S, Teede H
Pfizer Cardiovascular Lipid Grant
2006: \$55,000

Prizes and awards

Associate Professor Deb Colville

Australian Postgraduate Award
Monash FMNHS Top-Up Scholarship

Dr Amanda Deeks

Southern Health Scientific Meeting Research Award - First Prize

Professor Mike Georgeff and Dr Amy Lansky

Reactive reasoning and planning - The AAAI Classic Paper Award
National Conference of the American Association of Artificial Intelligence

Dr Samantha Hutchinson

NHMRC Scholarship
ADA Travel Award
RACP Scholarship Award
Southern Health Scientific Meeting Research Award - Third Prize

Professor Helena Teede

Australian Tall Poppy Award in Science

Tari Turner

Australian Postgraduate Award

Dr Sophia Zoungas

RACP Fellowship Award

Associate Professor Damien Jolley

Victorian Public Health Award 2006 for Research Innovation

Publications

Journal publications

Browning CJ, Kendig H, Thomas SA, Hui Y. Healthy Ageing in Australia: Policy responses and research opportunities. *Chinese General Practice*. 2006;19:1575-1578.

Buchbinder R, Green S, Youd J, Johnson R. Oral steroids for adhesive capsulitis. *The Cochrane Database of Systematic Reviews*. 2006, Issue 4.

Carey L, Rumbold B, Newell C, Aroni R. Bioethical issues and health care chaplaincy in Australia. *Scottish Journal of Healthcare Chaplaincy*. 2006;9(1):23-30.

Carter VM, Woolley I, Jolley D, Nyulasi I, Mijch A, Dart A. A randomised controlled trial of omega-3 fatty acid supplementation for the treatment of hypertriglyceridemia in HIV-infected males on highly active antiretroviral therapy. *Sexual Health*. 2006;3:287-90.

Clark NC, Dietze P, Lenne MG, Redman JR. Effect of opioid substitution therapy on alcohol metabolism. *Journal of Substance Abuse Treatment*. 2006;30:191-6.

Chen Y, Almeida AA, Goldstein J, Shardey GC, Pick AW, Moshinsky R, Kejriwal NK, Lowe C, Jolley D, Smith JA. Urgent and emergency coronary artery bypass grafting for acute coronary syndromes. *ANZ Journal of Surgery*. 2006;76(9):769-73.

Darzens P, Fone S, Darzens S. The International Classification of Functioning Disability and Health (ICF) can help to structure and evaluate therapy. *Australian Occupational Therapy Journal*. 2006;53:127-131.

Davidson S, Koritsas S, O'Connor DW, Clarke D. The feasibility of a GP led screening intervention for depression among nursing home residents. *International Journal of Geriatric Psychiatry*. 2006;21:1026-30.

Dietze P, Jolley D, Fry CL, Bammer G, Moore D. When is a little knowledge dangerous? Circumstances of recent heroin overdose and links to knowledge of overdose risk factors. *Drug and Alcohol Dependence*. 2006;84(3):223-30.

Dunstan D, Vulikh E, Owen N, Jolley D, Shaw J, Zimmet P. Community center-based resistance training for the maintenance of glycemic control in adults with type 2 diabetes. *Diabetes Care*. 2006; 29: 2586-91.

Dunt D, Elsworth G, Southern D, Harris C, Potiradis M, Young D. Individual and area factors associated with general practitioner integration in Australia: A multilevel analysis. *Social Science and Medicine*. 2006;63:680-690.

Dunt D, Southern D, Elsworth E, Harris C, Potiradis M, Young D. Mapping GP integration in the health care system in different locations in Australia. *Australian Journal of Primary Health*. 2006;12 (1):47-55.

French SD, Buchbinder R, Green S. Interventions for improving the appropriate use of imaging in people with musculoskeletal conditions. *The Cochrane Database of Systematic Reviews*. 2006, Issue 3.

French SD, Cameron M, Walker B, Reggars J, Esterman AJ. Superficial heat or cold for low-back pain. *The Cochrane Database of Systematic Reviews*. 2006, Issue 1.

French SD, Cameron M, Walker BF, Reggars JW, Esterman AJ. A Cochrane review of superficial heat or cold for low back pain. *Spine*. 2006;31(9):998-1006.

Georgeff M. Improving Chronic Care: Why the Usual Approaches Won't Work. *Hospital and Healthcare*. February 2006.

Gerner B, McCallum Z, Sheehan J, Harris C, Wake M. Are general practitioners equipped to detect child overweight/obesity? Survey and audit. *Journal of Paediatrics and Child Health*. 2006;42:206-211.

Glass D, Gray C, Jolley D, Gibbons C, Sim M. The HealthWatch case-control study of leukaemia and benzene: The story so far. *Annals of The New York Academy of Sciences*. 2006;1076:80-89.

Hakkennes S, Green S. Measures for assessing practice change in medical practitioners. *Implementation Science*. 2006;1:29.

Hutchison S, Zoungas S, Teede HJ. Insulin resistance in PCOS. (Letter) *Medical Journal of Australia*. 2006.

Huxham F, Gong J, Baker R, Morris ME, Iansek R. Defining spatial parameters for non-linear walking. *Gait and Posture*. 2006;23(2):159-63.

Hynson J, Aroni R, Bauld C, Sawyer S. Research with bereaved parents: A question of how not why. *Palliative Medicine*. 2006;20(8):805-811.

- Ianseck R, Huxham F, McGinley J. The sequence effect and gait festination freezing in Parkinson's disease: Contributors to freezing of gait? *Movement Disorders*. 2006;21(9):1419-24.
- Ilic D, O'Connor D, Green S, Wilt T. Screening for prostate cancer. *The Cochrane Database of Systematic Reviews*. 2006, Issue 3.
- Kavanagh AM, Davidson N, Jolley D, Heuzenroeder L, Chapman A, Evans J, Gertig DM, Amos A. Determinants of false positive recall in an Australian mammographic screening program. *Breast*. 2006;15(4):510-8.
- King T, Kavanagh AM, Jolley D, Turrell G, Crawford D. Weight and place: A multilevel cross-sectional survey of area-level social disadvantage and overweight/obesity in Australia. *International Journal of Obesity (London)*. 2006;30(2):281-7.
- Koklanis K, Abel L, Aroni R. The psychosocial impact of amblyopia and its treatment: A multidisciplinary study. *Clinical and Experimental Ophthalmology*. 2006;34(9):907-910.
- Koritsas S, Davidson S, O'Connor D, Clarke D. Diagnosing and treating depression in nursing home residents. *Australian Journal of Primary Health*. 2006;12:104-108.
- Leeflang M, McDonald S, Scholten RJPM, Reitsma H, Rutjes AWS. Search strategies to identify diagnostic accuracy studies in MEDLINE. *The Cochrane Database of Methodology Reviews*. 2006, Issue 2.
- Liang YL, Teede HJ, Dalais F, McGrath B. The effects of phytoestrogen on blood pressure and lipids in healthy volunteers. *Chinese Medical Journal*. 2006;34(8):726-9.
- Manoharan T, Darzins P. Acid suppression in the elderly. *Australasian Journal on Ageing*. 2006;25(3):164-166.
- Manser RL, Wright G, Byrnes G, Hart D, Conron M, Carter R, McLachlan S, Campbell DA. Validity of the Assessment of Quality of Life (AQoL) utility instrument in patients with operable and inoperable lung cancer. *Lung Cancer* 2006;53:217-229.
- Mazza D, Kermond S, Harris C. "I'm just ringing for some advice...": Issues concerning GP advice lines. *Australian Family Physician*. 2006;35(1-2):61-2.
- McCallum Z, Wake M, Gerner B, Baur L, Gibbons K, Gold L, Gunn J, Harris C, Naughton G, Riess C, Sancil L, Sheehan J, Ukoumunne O, Waters E. Outcome data from the LEAP (Live, Eat and Play) trial: A randomised controlled trial of a primary care intervention for childhood overweight/mild obesity. *International Journal of Obesity*. Epub: December 12 2006.
- Mortimer D, French SD. Short communication: Can dissenting findings regarding the comparative effectiveness of ICSI and IVF be explained by a learning curve? *Journal of Assisted Reproduction and Genetics*. 2006;23(1):33-36.
- Myers K, Fris R, Jolley D. Treatment of varicose veins by endovenous laser therapy: Assessment of results by ultrasound surveillance. *Medical Journal of Australia*. 2006;185(4):199-202.
- Myers KA, Jolley D, Clough A, Kirwan J. Outcome of ultrasound-guided sclerotherapy for varicose veins: Medium-term results assessed by ultrasound surveillance. *European Journal of Vascular and Endovascular Surgery*. 2007;33(1):116-21. Epub: October 24 2006.
- O'Connor D. Psychosis in the elderly: Assessment and management. *Australian Family Physician*. 2006;35:106-108.
- O'Connor DW. Do older Australians truly have low rates of anxiety and depression? A critique of the 1997 National Survey of Mental Health and Wellbeing. *Australian and New Zealand Journal of Psychiatry*. 2006;40:623-631.
- O'Connor D, Melding P. A survey of publicly-funded aged psychiatry services in Australia and New Zealand. *Australian and New Zealand Journal of Psychiatry*. 2006;40:368-373.
- Pirkis JE, Burgess PM, Francis C, Blood RW, Jolley DJ. The relationship between media reporting of suicide and actual suicide in Australia. *Social Science Medicine*. 2006;62(11):2874-86.
- Renzaho AM, Gibbons C, Swinburn B, Jolley D, Burns C. Obesity and undernutrition in sub-Saharan African immigrant and refugee children in Victoria, Australia. *Asia Pacific Journal of Clinical Nutrition*. 2006;15(4):482-90.
- Rinehart NJ, Tonge BJ, Bradshaw JL, Iansek R, Enticott PG, Johnson KA. Movement-related potentials in high-functioning autism and Asperger's disorder. *Developmental Medicine and Child Neurology*. 2006;48:272-277.

- Rinehart NJ, Tonge BJ, Bradshaw JL, Iansek R, Enticott PG, McGinley J. Gait function in high-functioning autism and Asperger's disorder: Evidence for basal-ganglia and cerebellar involvement. *European Child and Adolescent Psychiatry*. 2006;15(5):256-264.
- Rinehart NJ, Tonge BJ, Iansek R, McGinley J, Brereton AV, Enticott PG, Bradshaw JL. Gait function in newly diagnosed children with autism: Cerebellar and basal ganglia related motor disorder. *Developmental Medicine and Child Neurology*. 2006;48:819-824.
- Ritchie CW, Chiu E, Macfarlane S, Mastwyk M, Halliday G, Hustig H, Hall K, Hassett A, O'Connor DW, Opie J, Nagalingam V, Snowdon J, Ames D. A comparison of the efficacy and safety of olanzapine and risperidone in the treatment of elderly patients with schizophrenia: An open study of six months duration. *International Journal of Geriatric Psychiatry*. 2006;21:171-179.
- Runci SJ, Redman JR, O'Connor DW. Language-relevant interventions for verbally disruptive behaviours in dementia. *International Psychogeriatrics*. 2006;18:181-184.
- Scott I, Greenberg P, Poole P, Campbell D. Cautionary tales in the interpretation of systematic reviews of therapy trials. *Internal Medicine Journal*. 2006;36:587-599.
- Sims J Hill K, Davidson S, Gunn J, Huang N. Exploring the feasibility of a community-based strength training program for older people with depressive symptoms and its impact on depressive symptoms. *BMC Geriatrics*. 2006;6:18
- Stolwyk RJ, Charlton JL, Triggs TJ, Iansek R, Bradshaw JL. Effect of a concurrent task on driving performance in people with Parkinson's disease. *Movement Disorders*. 2006;21(12):2096-2100.
- Swinburn BA, Jolley D, Kremer PJ, Salbe AD, Ravussin E. Estimating the effects of energy imbalance on changes in body weight in children. *American Journal of Clinical Nutrition*. 2006;83(4):859-63.
- Swinburn BA, Jolley D, Kremer PJ, Salbe AD, Ravussin E. Reply to A Bosy-Westphal and MJ Müller. *American Journal of Clinical Nutrition*. 2006;84(4): 945-946.
- Teede HJ. Polycystic ovarian syndrome - Update. *Diabetes Management Journal*. 2006;16: 54-63.
- Teede HJ, Norman R. Polycystic ovarian syndrome: Insights into the enigma that is PCOS today. *Endocrine*. 2006;30(1): 1-2.
- Teede HJ, Zoungas S, Hutchison S, Meyer C. Insulin resistance, metabolic syndrome, diabetes and cardiovascular disease in polycystic ovarian syndrome. *Endocrine*. 2006;30(1):45-53.
- Turner T, Harris C. EBM teaching tip: Using lollies to show (non) concealment of allocation. *Evidence Based Medicine*. 2006;11(1):5.
- Vincent S, Toelle B, Aroni R, Reddel H, Jenkins C. "Exasperations" of asthma. *Medical Journal of Australia*. 2006;184(9):451-454.
- Wright PR, Lawrence SM, Campbell DA, Colman PG. Retrospective data for diabetic foot complications: Only the tip of the iceberg? *Internal Medicine Journal*. 2006;36(3): 197-199.
- Wright G, Manser RL, Byrnes G, Hart D, Campbell DA. Surgery for non-small cell lung cancer: Systematic review and meta-analysis of randomised controlled trials. *Thorax*. 2006;61(7):597-603.
- Yang H, Browning C, Thomas S. Healthy, active and productive ageing: Strategic themes for policy and community services in Australia. *Chinese General Practice*. 2006;19:1571-1575.
- Zoungas S, McGrath BP, Branley P, Kerr PG, Muske C, Wolfe R, Atkins RC, Nicholls K, Fraenkel M, Hutchison BG, Walker R, McNeil JJ. Cardiovascular morbidity and mortality in the atherosclerosis and folic acid supplementation trial in chronic renal failure (ASFAST): A multicenter randomised controlled trial. *Journal of American College of Cardiology*. 2006;47:1108-16.
- Zoungas S, Teede HJ. Does metformin treatment really improve arterial structure in women with polycystic ovarian syndrome? (Letter) *Journal of Clinical Endocrinology and Metabolism*. 2006.

Books and book chapters

Browning CJ, Thomas SA (2006). Introduction. In Browning C and Thomas SA (Eds). *Behavioural change: An evidence based handbook for social and public health*. Pages 1-6. Edinburgh: Churchill Livingstone.

Browning CJ, Thomas SA (2006). Models of behaviour change and health promotion. In Browning C and Thomas SA (Eds). *Behavioural change: An evidence based handbook for social and public health*. Pages 7-16. Edinburgh: Churchill Livingstone.

Browning CJ, Thomas SA (2006). The way forward in the design and development of effective behaviour change programs. In Browning C and Thomas SA (Eds). *Behavioural change: An evidence based handbook for social and public health*. Pages 295-308. Edinburgh: Churchill Livingstone.

Browning CJ, Thomas SA (2006). Tobacco dependence, smoking prevention and cessation. In Browning C and Thomas SA (Eds). *Behavioural change: An evidence based handbook for social and public health*. Pages 153-168. Edinburgh: Churchill Livingstone.

O'Connor D, Piterman L, Darvall, L (2006). Common mental health problems in the elderly. In G Blashki, F Judd, L Piterman (Eds). *General Practice Psychiatry*. Pages 257-276. Sydney: McGraw Hill.

Wainer J (2006). *Lost: Illegal abortion stories*. Melbourne University Press.

Deeks AA (2006). *Life begins at menopause?* Jean Hails Foundation for Women's Health.

Burger H, Teede HJ (2006). Endocrine changes during the perimenopause. In Lobo RA (Ed). *Treatment of the Postmenopausal Woman: Basic and Clinical Aspects (3rd Edition)*. Philadelphia: Lippincott Williams and Wilkins.

Online publications

Allen K. *Assessment of mycophenolate for lupus nephritis treatment. Evidence Report: The Centre for Clinical Effectiveness 2006*.
<http://www.mihsr.monash.org/cce>

Allen K. Single or double checking of medications prior to administration. *Evidence Report: The Centre for Clinical Effectiveness 2006*.
<http://www.mihsr.monash.org/cce/pdf/ers/singleordoublechecking.pdf>

Health for Kids Bronchiolitis Guideline Development Group. *2006 Evidence-based practice guideline for the management of bronchiolitis in infants and children*. Southern Health, Melbourne.
<http://www.mihsr.monash.org/hfk/guidelines.html>

Health for Kids Gastroenteritis Guideline Development Group. *2006 Evidence-based practice guideline for the management of diarrhoea with or without vomiting in children*. Southern Health, Melbourne.
<http://www.mihsr.monash.org/hfk/guidelines.html>

Turner T. Gastric feeding tubes in neonates - placement methods. *Health for Kids Evidence Report: The Centre for Clinical Effectiveness 2006*.
<http://www.mihsr.monash.org/hfk/paedevideid.html>

Turner T. *Gastric feeding tubes in neonates - position assessment. Health for Kids Evidence Report: The Centre for Clinical Effectiveness 2006*.
<http://www.mihsr.monash.org/hfk/paedevideid.html>

Turner T, Harris C. *Guidelines for foetal alcohol disorders. Health for Kids Evidence Report: The Centre for Clinical Effectiveness 2006*.
<http://www.mihsr.monash.org/hfk/paedevideid.html>

Turner T, Harris C. *Use of x-rays in asthma. Health for Kids Evidence Report: The Centre for Clinical Effectiveness 2006*.
<http://www.mihsr.monash.org/hfk/paedevideid.html>

Reports and other publications

Angus J, Feldman S, Sims J. *Dementia risk reduction: Community education strategies scoping project report prepared for Alzheimer's Australia*. June 2006.

Australian Film Corporation. *Abortion, Corruption and Cops; The Bertram Wainer story* (documentary). March 2006.

Browning C, Thomas S. *Successful ageing project discussion report definition and predictors of successful ageing and related concepts. Report to the Victorian Department of Human Services*. November 2006.

Campbell D, Green S, Gruen R, Jolley D, Pitt V, Zavarsek S. *Hospital and clinician volume or specialisation in cancer care. Report to the Victorian Department of Human Services*. June 2006.
<http://www.health.vic.gov.au/cancer/litreview.htm>

Georgeff M. *Service orchestration: The next big challenge. DM Direct Special Report*. May 2006.

Green S, Pitt V, O'Connor D, French S, Hill S, Spike N. *Closing the gap between research and practice in self-management of osteoarthritis. Report to the Victorian Department of Human Services*. May 2006. <http://www.health.vic.gov.au/researchprograms/news.htm#oct06>

Ilic D, Murphy K, Green S. *Barriers men encounter when seeking treatment for erectile dysfunction: The role of their partner and doctor*. Andrology Australia. 2006.

Lombard C. *Weight matters*. Australian Menopause Society. March 2006.

McDonald M, Wainer J. *Best practice delivery of general practice training to female registrars: The VMA*. Centre for Gender and Medicine, Monash Institute of Health Services Research. Monash University 2006.

Sims J, Hill K, Hunt S, Haramboulos B. *Guidelines and recommendations for physical activity in older people Melbourne: NARI. Report to the Department of Health and Ageing*. April 2006.

Presentations

Oral presentations

Aroni R. Beliefs about qualitative research: What constitutes cutting edge research? The Seventh International Interdisciplinary Conference Advances in Qualitative Methods. Surfers Paradise, Queensland. July 2006.

Aroni R. Qualitative methods in vision research. Department of Optometry, University of Melbourne. 2006.

Aroni R. Rigour and translation: Going from multi to trans-disciplinary research. The Second Annual International Mixed Methods Conference. Cambridge, United Kingdom. July 2006.

Aroni R. Synthesizing qualitative research: The production of evidence. The Seventh International Interdisciplinary Conference Advances in Qualitative Methods. Surfers Paradise, Queensland. July, 2006.

Aroni R. Teaching health sociology to medical students: Theories and realities. Medical Faculty Seminar, Monash University. Kuala Lumpur, Malaysia. June 2006.

Aroni R, Gupta S, Teede H. Chronic disease management and ethnicity: Reconstituting modes of analysis. Annual TASA Conference. Perth, Western Australia. December 2006.

Browning C. Health, behaviours and ageing (symposium convenor). 19th Biennial Meeting of the International Society for the Study of Behavioral Development. Melbourne, Victoria. July 2006.

Browning C. Older people and transport. Transport, Social Disadvantage and Wellbeing Conference. Melbourne, Victoria. April 2006.

Browning C. Social well-being and health in older people: Findings from longitudinal studies in Australia (symposium convenor). Australian Association of Gerontology 39th Annual Conference. Sydney, NSW. November 2006.

Browning C, Thomas C, Bird S, Feldman S, Seedsman T. Physical activity and health in older people from CALD communities: Environmental influences. 9th International Congress of Behavioural Medicine. Bangkok, Thailand. November 2006.

Campbell D. Monitoring quality and supporting clinical effectiveness using evidence based clinical practice guidelines. Centre for Research Excellence in Patient Safety: Monitoring Quality of Care in Hospitals Seminar. Melbourne, Victoria. April 2006.

Campbell D. The cumulative effect of CUSUM analysis: Application to patient administrative datasets in two Victorian hospitals. International Conference on Health and Social Care Modelling and Applications. Adelaide, South Australia. April 2006.

Campbell D. Approaching epidemiology from an Allied Health perspective. St Vincent's Health Allied Health Research Symposium. Melbourne, Victoria. June 2006.

Campbell D. Capacity prediction and planning in emergency departments: Trial at The Royal Melbourne Hospital. Optimising Patient Flow Conference. Sydney, New South Wales. June 2006.

Campbell D, Ilic D. Teach the teachers. Monash University. Kuala Lumpur, Malaysia. September 2006.

Campbell D. Health services research – relevance to child health? Centre for Community Child Health, Royal Children's Hospital. Melbourne, Victoria. October 2006.

Campbell D. Clinical indicators: What are they, who is using them and what is the evidence? RACP/IMSANZ Clinical Indicators Workshop. Sydney, New South Wales. November 2006.

Cant R, Aroni R. "Talking the talk": Dieticians' advice on using the power of language to effectively evaluate the process of their nutrition education practice. Dieticians' Association of Australia National Conference. Sydney, New South Wales. May 2006.

Cant R, Aroni R. The good, the bad and the ugly: Dieticians' Perceptions of reconstructing the image of dietetics from a "restrictive" to a "helping" profession. Dieticians' Association of Australia National Conference. Sydney, New South Wales. May 2006.

Danoudis M. Exercise for PD. The Recently Diagnosed Seminar, Parkinson Victoria. Melbourne, Victoria. September 2006.

Danoudis M. Recognising the variability in motor performance in challenging movement disorders, e.g. Parkinson disease, frontal gait apraxia, progressive supranuclear palsy. Australian Physiotherapy Association Clinical Reasoning Session on Movement Disorders. Melbourne, Victoria. October 2006.

Darzens P. Assessment of decision-making capacity. Flinders Medical Centre Seminar. Adelaide, South Australia. November, 2006.

Darzens P. Clinical use of the PC-PART. Improving information on disability and functioning: A forum for people who need, use or develop information. Australian Institute for Health and Welfare Seminar. Sydney, New South Wales. February 2006.

Darzens P. Educating future geriatricians. Australian Society for Geriatric Medicine ASM. Christchurch, New Zealand. September 2006.

Darzens P. Older driver licensing – The way forward? Australian Transport Ministers Workshop, Monash University Accident Research Centre. Melbourne, Victoria. July 2006.

Darzens P. Older driver licensing workshop. Australasian Road Safety Research Policing and Education Conference. Gold Coast, Queensland. October 2006.

Darzens P, Brown S. Delirium. Southern Health Grand Round. Melbourne, Victoria. October 2006.

Darzens P, Ogrin R. Compression is the answer. Southern Health Professorial Round. Melbourne, Victoria. November 2006.

French S, McKenzie J, O'Connor D, Mortimer D, Green S, Grimshaw J, Schattner P, Spike N, Buchbinder R, Michie S, Francis J. IMPLementing a clinical practice guideline for acute Low-back pain Evidence-based management in general practice (IMPLEMENT): A cluster randomised controlled trial research protocol. The Chiropractic and Osteopathic College of Australasia National Conference. Melbourne, Australia. October 2006.

Georgeff M. Health, information, technology and the knowledge economy. Public lecture at Victoria University. New Technologies and Health: The Impact of Medicines and Information Technologies. Melbourne, Victoria. 2006

Georgeff M. Information technology and health care. Thai Computer Science Linkage Workshop. Bangkok, Thailand. June 2006.

Georgeff M. Intelligent health networks: Changing our way of health care. APHM International Healthcare Conference. Kuala Lumpur, Malaysia. June 2006.

Georgeff M. Intelligent health networks: Changing our way of healthcare. The Third Joint Conference on Computer Science and Software Engineering. Bangkok, Thailand. June 2006.

Georgeff M. The intelligent health system. Australian Health Summit 2006: The Future of the Australian Health Industry. Melbourne, Victoria. July 2006.

Georgeff M. Transforming aged care: Connectivity and intelligent services. The Third Aged Care Informatics Conference. Hobart, Tasmania. May 2006.

Georgeff M. Web services and service orientated architecture: Can these technologies transform health care? Web Services in Health Workshop. Sydney, NSW. March 2006.

Goeman D, Aroni R, Yu E, Stewart K, Sawyer S, Abramson M, Douglass J. Linking research and academic communities with policy makers. The Seventh International Interdisciplinary Conference Advances in Qualitative Methods. Surfers Paradise, Queensland. July, 2006.

Green S. Achievements of the Cochrane Collaboration. Effective Care in Gynaecology Conference. Auckland, New Zealand. February 2006.

Green S. Multidisciplinary approaches to implementing evidence. National Institute of Clinical Studies Scholars Masterclass. Melbourne, Victoria. May 2006.

Green S. Using a Cochrane review to treat a patient with pain. The 26th Annual Scientific Meeting of the Australian Pain Society. Melbourne, Victoria. April 2006.

Harris C. A Journey with consumers. Southern Health HARP CDM Forum. September 2006.

Harris C. Barriers and enablers: Implementing a guideline for management of paediatric asthma. National Institute of Clinical Studies Symposium. Melbourne, Victoria. October 2006.

Harris C. Building blocks to improve Health for Kids: Evidence-based guidelines and clinical paths. Southern Health CEO Forum. November 2006.

Harris C. Evidence-based practice. Southern Health CAHMS Clinical Practice Improvement Meeting. August 2006.

Harris C. Health for Kids in the South East: Implementing paediatric guidelines through a local child health network. National Institute of Clinical Studies Symposium. Melbourne, Victoria. October 2006.

Harris C. How to teach/influence others in evidence-based practice. National Institute of Clinical Studies Masterclass. Melbourne, Victoria. May 2006.

Harris C (for the Newborn Services Enteral Feeding Guideline Steering Group). Research into practice to support a healthy start to life: Guidelines for introduction of feeding in newborn services. Healthy Start to Life Conference. Melbourne, Victoria. April 2006.

Harris C, Turner T. Nasogastric tubes, bloody diarrhoea and reusing spacers: What's the link? Evaluation of a paediatric evidence centre. Southern Health Children's Program Grand Round. July 2006.

Huxham F. Cyclic and non-cyclic gait. The Gait CCRE Inaugural Gait Course. Melbourne, Victoria. December 2006.

Huxham F. Footstep adjustments used to turn in Parkinson disease: Contributors to falling? The 2nd Australian Falls Prevention Conference. Brisbane, Queensland. November 2006.

Huxham F. Principles of therapy and strategy use in Parkinson disease. Australian Physiotherapy Association Gerontology Special Interest Group. Melbourne, Victoria. November 2006.

Huxham F. Turning during walking in Parkinson disease: A comparison with unimpaired young and older adults. The Gait CCRE Seminar. Melbourne, Victoria. June 2006.

Iansek R. Gait disorders. Monash Medical Centre Student Lecture. Melbourne, Victoria. September 2006.

Iansek R. Medical management of Parkinson's. Queensland Physicians Multidisciplinary Symposium. June 2006.

Iansek R. Medical management of Parkinson's. Swan Hill Hospital. Swan Hill, Victoria. October 2006.

Iansek R. Multidisciplinary management of Parkinson disease. The Movement Disorders Society 10th International Congress of Parkinson's Disease and Movement Disorders. Kyoto, Japan. November 2006.

Iansek R. Neuropsychiatric problems in Parkinson's disease: A rational approach to management. Memory and Movement Specialist Forum. June 2006.

Iansek R. Overview of medical management of Parkinson. Kingston Centre. Melbourne, Victoria. June 2006.

Iansek R. Parkinson's and dementia: A rational approach to management. Neuropsychiatry Meeting. April 2006.

Iansek R. Parkinson's: A medical overview. Aged Care Conference. Cape Schanck, Victoria. April 2006.

Iansek R. Parkinson's: A medical overview. Fitzpatrick House Specialist Surgeons. Sale, Victoria. September 2006.

Iansek R. Parkinson disease: The basics. The Recently Diagnosed Seminar, Parkinson Victoria. Melbourne, Victoria. September 2006.

Iansek R. Rehabilitation in gait disorders: Theoretical issues and practical applications. International Congress on Gait and Mental Function. Madrid, Spain. February 2006.

Iansek R, Kirkwood B. Movement normalization strategies in Parkinson's disease: Which, when and why. The 1st World Parkinson Congress. Washington, USA. February 2006.

Iansek R, Kirkwood B. The role of interdisciplinary teams in management of Parkinson's in Australia. The 1st World Parkinson Congress. Washington, USA. February 2006.

Iansek R, Morris M. Freezing of gait and locomotion. The Movement Disorders Society 10th International Congress of Parkinson's Disease and Movement Disorders. Kyoto, Japan. October 2006.

Ilic D. An introduction to evidence based medicine. Monash University. Kuala Lumpur, Malaysia. September 2006.

Ilic D. An introduction to systematic reviews. Monash University. Kuala Lumpur, Malaysia. September 2006.

Ilic D. Assessing evidenced based medicine. Victorian Medical Post Graduate Foundation. Melbourne, Victoria. October 2006.

Ilic D. e-Health: Finding and appraising health information on the internet. Department of Health and Ageing. Canberra, ACT. November 2006.

Ilic D. Prostate cancer screening and evidence based medicine. Monash University. Kuala Lumpur, Malaysia. September 2006.

Ilic D. Male infertility (radio presentation). Inner FM Radio. Melbourne, Victoria. November 2006.

Ilic D, Murphy K, Green S. Barriers men face when seeking treatment for erectile dysfunction. The Second Asia-Pacific Forum on Andrology. Shanghai, China. October 2006.

Kendig H, Browning C, Thomas S. Life style predictors of healthy ageing: Australian longitudinal findings. British Society of Gerontology 35th Annual Scientific Meeting. University of Wales, United Kingdom. September 2006.

Kermond S, Harris C, Doherty R, Rosengarten P, Mazza D, Turner T, Hille V. Paediatric rapid review clinic: An innovative model of care keeping children out of hospital. The Royal Australasian College of Physicians Annual Scientific Meeting. Sydney, NSW. May 2006.

King C. The Kobe earthquake and effects on older people living in Kobe. Master of Public Health Lecture. Melbourne, Victoria. 2006.

King C, Phipps-Nelson J, Wood J, Ibrahim J. A survey on patient safety culture in staff working with elderly patient populations within an Australian regional health service. The 4th Australasian Conference on Safety and Quality in Health. Melbourne, Victoria. August 2006

Marshall H, Aroni R. Teaching sociology to human service professionals (presenter and session co-convenor). Annual TASA Conference. Perth, Western Australia. December 2006.

Murphy A. Capturing 3D Data. The Gait CCRE Inaugural Gait Course. Melbourne, Victoria. December 2006.

Murphy A. Clinical gait analysis service and geriatric research unit. Kingston Centre Hospital Exercise Physiologists Group. Melbourne, Victoria. November 2006.

Naccarella L, Sims J. Using context evaluation methods to understand what really happens within Australian primary health care integration interventions. North American Primary Care Research Group Conference. Arkansas, USA. September 2006.

Naccarella L, Sims J. Using context evaluation methods to understand what really happens within primary health care integration interventions. The General Practice and Primary Care Conference. Perth, Western Australia. July 2006.

Nielsen S, Lee N, Dietze P, et al. Benzodiazepine use in opioid substitution treatment: Practices and adverse outcomes. W.I.P. Seminar. Translating Research Into Practice: Making Services, Research and Development Matter. Melbourne, Victoria. August 2006.

Nielsen S, Lee N, Stoope M, Dietze P, et al. Examining two cohorts of clients prescribed opioids and benzodiazepines at a specialist drug and alcohol treatment service in Melbourne, Victoria. Annual Conference of The Australasian Professional Society on Alcohol and Other Drugs. Cairns, Queensland. November, 2006.

Nobelius A. Making gender-specific medicine mainstream. The First World Congress on Gender Specific Medicine. Germany. February 2006.

O'Connor D. An introduction to Cochrane systematic reviews and oral health. Australian Research Centre for Population Oral Health. Adelaide, South Australia. May 2006.

O'Connor D. Fitness to practice: The notion of evidence-based practice. Fitness to Practice: Implications for the Health Professional and Clinical Educators. Melbourne, Victoria. June 2006.

O'Connor D. Introduction to evidence-based practice. Royal Hobart Hospital Postgraduate Teaching Lecture. Hobart, Tasmania. May 2006.

O'Connor D. Systematic reviews and meta-analysis. Department of Public Health Postgraduate Teaching Lecture, University of Melbourne. Melbourne, Victoria. April 2006.

O'Connor D, Green S, French S, Grimshaw J, Spike N, Schattner P, McKenzie J, King S, Michie S, Francis J. Using a theoretical framework to identify and address barriers to the uptake of a low-back pain clinical practice guideline in primary care. The Chiropractic and Osteopathic College of Australasia National Conference. Melbourne, Victoria. October 2006.

- O'Connor D, Green S, King S, French S, Grimshaw J, Spike N, Schattner P, Michie S, Francis J, McKenzie J. Understanding barriers and enablers to guideline implementation using a theoretical framework. Using Evidence, Using Guidelines Symposium, National Institute of Clinical Studies. Melbourne, Victoria. October 2006.
- Pitt V. Hospital and clinical volume or specialisation in cancer care – What have we learnt from the research? Change Champions: Improving the Management of Cancer Services. Melbourne, Victoria. March 2006.
- Sims J, Browning C, Thomas S, Lindner H, Vatta A. The Good Life Club. Australian/New Zealand Psychological Society Annual Conference. Auckland, New Zealand. September 2006.
- Sims J, Galea M, Dodd K, Taylor N, Joubert J, Joubert L. Regenerate: Enhancing the physical and mental health of chronic post stroke patients. The Sixteenth National Australian Health Promotion Conference. Alice Springs, Northern Territory. April 2006.
- Sims J, Galea M, Dodd K, Taylor N, Joubert J, Joubert L, Brett R. Regenerate: Using physical activity to enhance the physical and mental health of chronic post stroke patients. The Australian Health Outcomes Conference. Canberra, ACT. August 2006.
- Teede HJ. Androgen use in women. Endocrine Society of Australia Annual Scientific Meeting. Gold Coast, Queensland. September 2006.
- Teede HJ. Menopause and hormone replacement therapy. National Women's Health GP Forum. Healesville, Victoria. 2006.
- Turner C, Fricke J, Darzins P. The inter-rater reliability of the Personal Care Participation Assessment and Resource Tool (PC-PART) in a clinical setting. World Federation of Occupational Therapy Meeting, Sydney 2006.
- Wainer J. Creating medical knowledge: Science and gender. Monash Institute of Medical Research Seminar. Melbourne, Victoria. September 2006.
- Wainer J. Gender in the medical curriculum. World Health Organisation Workshop: Mainstreaming Gender into Health Science Curriculum. Geneva, Switzerland. December 2006.
- Wilkinson F. Consumer participation – What every manager needs to know. Southern Health Workshop. Melbourne, Victoria. December 2006.
- Workman B. Pain in cognitively impaired nursing home residents. Ausmed Conference. Melbourne, Victoria. February 2006.
- Zabinski JA, Aroni R. Circumnavigating mines in the field: Politics and moral dilemmas in researching veteran health. Annual TASA Conference. Perth, Western Australia. December 2006.
- Zabinski JA, Aroni R. She'll be 'right: How the homeostasis imperative affects health outcomes for Australian veterans with post traumatic stress disorder (PTSD). Annual TASA Conference. Perth, Western Australia. December 2006.
- Zabinski JA, Aroni R. Who cares: Redefining the loci of care work in veteran community health. Annual TASA Conference. Perth, Western Australia. December 2006.
- Zoungas S, Cameron JD, Giannopoulos D, Martin CA, Kerr PG, Teede HJ, McGrath BP. Aortic pulse wave velocity is increased in diabetic patients but augmentation index is not. High Blood Pressure Society Annual Scientific Meeting. Brisbane, Queensland. December 2006.

Poster presentations

Darzens P, Fone S, Elliott R, Lilly A. Use of the ICF to operationalise a rehabilitation model of care. World Federation of Occupational Therapy Meeting. Sydney, New South Wales. July 2006.

Deeks A, Zoungas S, Teede HJ. Risk perception and menopause. Southern Health Scientific Meeting. Melbourne, Victoria. September 2006.

French S, O'Connor D, Green S, McKenzie J, Grimshaw J, Schattner P, Spike N, Buchbinder R, Mortimer D. Implementing a clinical practice guideline of acute low back pain in general practice: Design of a cluster randomised controlled trial. International Forum VIII: Primary Care Research on Low Back Pain. Amsterdam, Netherlands. June 2006.

French S, O'Connor D, Michie S, Francis J, Grimshaw J, Buchbinder R, McKenzie J, Green S. Developing an implementation strategy using a theoretical framework: The intervention for the IMPLEMENT trial. Using Evidence, Using Guidelines Symposium. National Institute of Clinical Studies. Melbourne, Victoria. October, 2006.

Harris C, Turner T, Wilkinson F. Getting it right: Evidence-based change – Building blocks to improve Health for Kids: Evidence-based guidelines and clinical paths. Southern Health Scientific Meeting. Melbourne, Victoria. September 2006.

Harris C, Wilkinson F, Turner T, Foster S, Campbell L, Wilson M, Mazza D, Kermond S. Building blocks to improve Health for Kids: Evidence-based guidelines and clinical paths. 'Southern Health Celebrates'. October 2006.

Hutchison SK, Meyer C, Zoungas S, Teede HJ. Detection of impaired glucose tolerance in polycystic ovary syndrome. ADS/ADEA Annual Scientific Meeting. Gold Coast, Queensland. August 2006.

Hutchison SK, Meyer C, Zoungas S, Teede HJ. Detection of impaired glucose tolerance in polycystic ovary syndrome. Southern Health Scientific Meeting. Melbourne, Victoria. September 2006.

Hutchison SK, Meyer C, Zoungas S, Teede HJ. Glucose intolerance in polycystic ovary syndrome. Australian Society for Medical Research. Melbourne, Victoria. December 2006.

Ilansek R, Kirkwood B. Tolcapone in the management of COMT inhibition failure in Parkinson's disease. The Movement Disorders Society 10th International Congress of Parkinson's Disease and Movement Disorders. Kyoto, Japan. November 2006.

Ilansek R, Makutonina M, DeSilva C. Efficacy of tolcapone in patients switched from entacapone for treatment failure. The Movement Disorders Society 10th International Congress of Parkinson's Disease and Movement Disorders. Kyoto, Japan. November 2006.

Ilic D, Egberts K, McKenzie J, Risbridger G, Green S. Educating men about prostate cancer screening: A randomised controlled trial. The Second Asia-Pacific Forum on Andrology. Shanghai, China. October 2006.

Ilic D, O'Connor, Green S, Wilt T. Screening for prostate cancer: A Cochrane systematic review. The Second Asia-Pacific Forum on Andrology. Shanghai, China. October 2006.

King C, Phipps-Nelson J, Wood J, Ibrahim J. A survey on patient safety culture in staff working with elderly patient populations within an Australian regional health service. Australasian Conference on Safety and Quality in Health Care. Melbourne, Victoria. August 2006.

Lombard C, Teede H. A low intensity community based lifestyle intervention prevents weight gain and improves physical and mental wellbeing in adult women. The International Obesity Scientific Meeting. Sydney, New South Wales. October 2006.

Lombard C, Teede H. A low intensity community based lifestyle intervention prevents weight gain and improves physical and mental wellbeing in adult women. Southern Health Scientific Meeting. Melbourne, Victoria. September 2006.

Medhurst A, Courtot J, Ramsden A, Harris C, Wilkinson F, Turner T, Henderson K. Developing an evidence-based feeding guideline. 'Southern Health Celebrates'. Melbourne, Victoria. October 2006.

Misso M, Brennan S, Green S. Encouraging and supporting Australian policy makers to use Cochrane reviews – further reporting of a three year initiative. XIV Cochrane Colloquium. Dublin, Ireland. October, 2006.

Morris ME, Iansek R. Effects of strategy training compared to exercises for gait rehabilitation in Parkinson disease: A randomized controlled trial. The Movement Disorders Society 10th International Congress of Parkinson's Disease and Movement Disorders. Kyoto, Japan. November 2006.

O'Connor D, Green S, French S, Grimshaw J, Spike N, Schattner P, McKenzie J, King S. Using a theoretical framework to identify and address barriers to the uptake of evidence-based clinical practice guidelines in general practice. International Forum VIII: Primary Care Research on Low Back Pain. Amsterdam, Netherlands. June 2006.

Sulaiman N, Liaw T, Barton C, Chondros P, Harris C, Sawyer S, Dharmage S. Does an interactive workshop improve general practitioners management of asthma? Australian Asthma Conference. Adelaide, South Australia. October 2006.

Wong JLA, Zoungas S, Williamson M, Jayasuria I, Teede HT. Perioperative diabetes management project: Improving outcomes for diabetic patients undergoing cardiac and vascular surgery. ADS/ADEA Annual Scientific Meeting. Gold Coast, Queensland. August 2006.

Wong JLA, Zoungas S, Williamson M, Jayasuria I, Teede HJ. Perioperative diabetes management project: Improving outcomes for diabetic patients undergoing cardiac and vascular surgery. Southern Health Scientific Meeting. Melbourne, Victoria. September 2006.

Financial statement

to 31 December 2006

Monash University Funds Statement for the year ended 31 December 2006		
		2006 Actual
Previous years funds		
	BBF	\$947,530
Income		
	General revenue	\$1,282,383
	Other income	\$171,004
	Commercial services income	\$998,085
	Student course fees	\$8,550
	Non-research funding	\$50,500
	Research income	\$1,297,772
		\$3,808,294
Salaries expenditure		
	All salaries expenditure	\$2,718,286
		\$2,718,286
Non-salary expenditure		
	Other expenses (inc CapExp)	\$141,863
	Financial and admin services	\$516,592
	Travel and related	\$153,678
	Books and library	\$8,522
	Print and stationery	\$72,324
	Computer-related	\$111,034
	Communications	\$52,985
	Equipment-related	\$46,528
	Lab and operating	\$2,679
	Student-related	\$84,626
	Staff-related (in SH Staff Sals)	\$15,524
	Motor vehicle	\$8,104
	Building and property	\$6,766
		\$1,221,225
Balance in Southern Health		\$660,415
Net position		\$1,476,728

Monash Institute of Health Services Reserarch

Monash Medical Centre
Level 1
43-51 Kanooka Grove
Locked Bag 29
Clayton, Victoria 3168
Australia

Phone: +61 3 9594 7500

Fax: +61 3 9594 7554

Email: monash.healthservices@med.monash.edu.au

Web: www.mihsr.monash.org